



n8/n12 Firmware V1.03 Update Guide (For Mac OS X)

Thank you for choosing a Yamaha product.

The n8/n12 Firmware Updater lets you update the firmware of the n8/n12 Digital Mixing Studio.

This document explains how to update the firmware of the n8/n12 by using a Macintosh computer connected to the n8/n12 via FireWire.

Precautions (please be sure to read these)

- **The n8/n12 Firmware V1.03 is compatible only with the Yamaha Steinberg FW Driver. The n8/n12 will no longer be able to work with n Driver, AI Driver, or mLAN Driver/mLAN Tools after updating to V1.03 or later. It is impossible to downgrade to the previous version. If you need to use the n8/n12 with other mLAN devices such as 01X, please don't update.**
- The user assumes full responsibility for the update.
- Please note that the n8/n12 may be damaged if you fail to follow these instructions properly, or turn off the n8/n12 or disconnect the cable while the update is in progress.
- If the update fails, and the n8/n12 still does not operate correctly even after you execute the update once again, please contact your Yamaha dealer.
- This software and documentation are the exclusive copyrights of Yamaha Corporation.
- Reproducing or modifying all or part of this software or its documentation without permission is strictly prohibited.
- The screen shots in this guide are for use with this update procedure only and may be different from the actual screen shots.
- Apple, Mac and Macintosh are trademarks of Apple Inc., registered in the U.S. and other countries.
- FireWire, the FireWire symbol and FireWire logo are trademarks of Apple Inc., registered in the U.S. and other countries
- The company names and product names in this document are the trademarks or registered trademarks of their respective companies.

System requirements

Your system must satisfy the following requirements in order to update successfully.

A Macintosh computer equipped with the following conditions:

- Yamaha Steinberg FW Driver is installed and works properly on the computer

Included Files

This folder contains the following files:

•update_guide_mac_en	This document (PDF file)
•releasenotes_en	Describes the update history.
•nUpdate	The update program
•N_FIRM_103.MID	The update data

Preparing for the update

Before starting the update program, quit all other programs. While the update is in progress, do not start any other programs or switch between windows.

If your computer enters Sleep or Energy Save modes, data transfer to the n8/n12 may stop. Therefore, you should disable these functions to prevent this from happening. We also recommend that you do not use any screen saver or similar background programs.

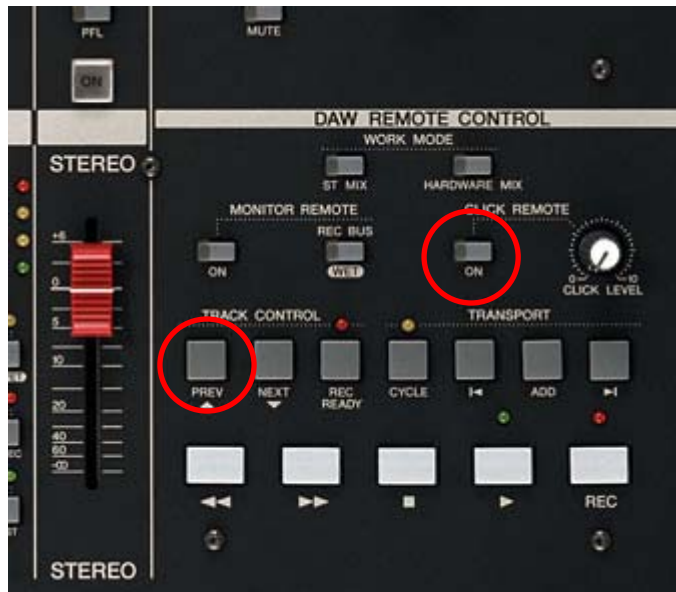
Make sure that “nUpdate” and “N_FIRM_103.MID” reside in the same folder.

Update procedure

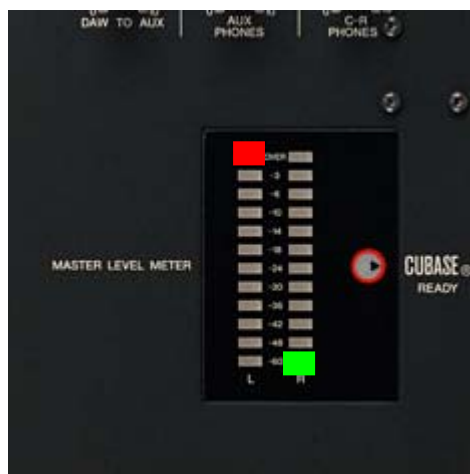
1. Connect a computer directly to a n8/n12 (without using a hub) by using a FireWire cable.

Be sure to disconnect all other FireWire devices, except the one to be updated.

2. Simultaneously hold down the [PREV] button and [CLICK REMOTE ON] buttons and turn the power on for the n8/n12.

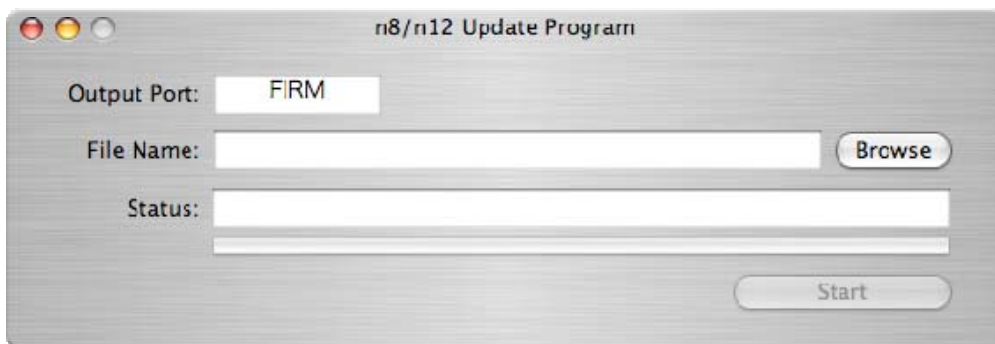
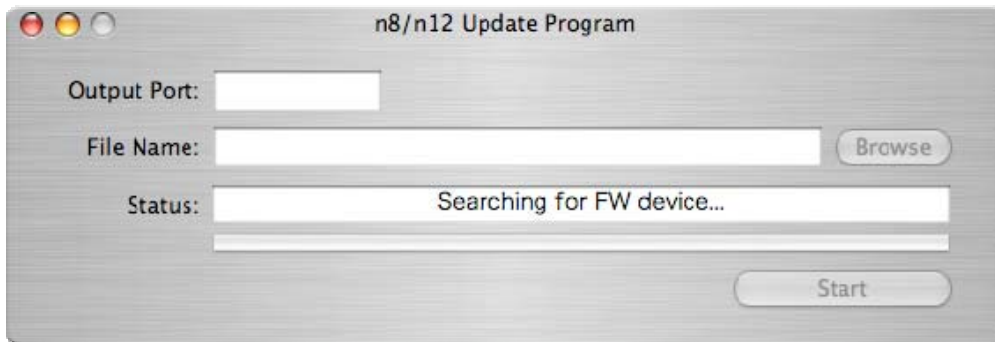


The n8/n12 will boot up in update mode. When booting up in update mode, the LED at the top of the MASTER LEVEL METER-L lights up. After a few seconds, the LED at the bottom of the MASTER LEVEL METER-R will flash.



3. Double-click “nUpdate” to start the program.

When the program works correctly, “Searching for FW device...” will briefly be shown in the Status column for a short time. Then, the Output Port column will display “FIRM.”



- If an error message appears, check the cable connection and system requirements, and start the program again.
- For details about the error messages, see page 6.

4. Select the Update data to click the [Browse] button in the dialog.

The Update data is “N_FIRM_103.MID” which is in the same folder as “nUpdate.”



- If the update file is not correct, the Status column will display “File format error!!”

5. Click the [Start] button to start the update process.

The Status column will display “Installing....”

It may take approximately four minutes to complete the update process. The n8/n12 will restart automatically after finishing the update process.



CAUTION

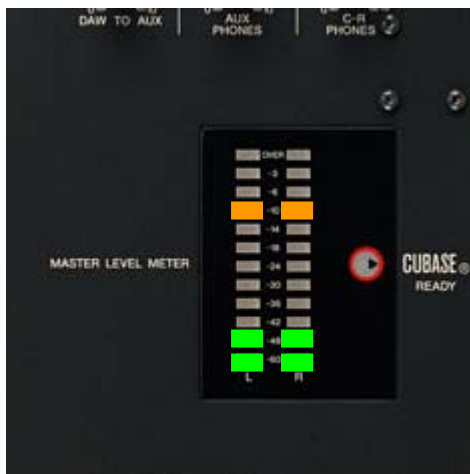
When the update data transfer is completed, the Status column will display “Transfer complete. Please wait until n8/n12 rebooting completion.” **Keep in mind however, the update process is not actually complete until rebooting.**

While the update is in progress, never turn off the device or disconnect the cable. Please note that the device may be damaged if such a situation happens accidentally while the update is in progress. If the update fails, and the n8/n12 still does not operate correctly even after you execute the update once again, please contact your Yamaha dealer.

Confirming the update

When the update process is completed after the n8/n12 is restarted, confirm the version information by following the procedure below.

- 1. Turn power off the n8/n12.**
- 2. Turn power on the n8/n12 while holding down the [STOP] button.**
- 3. Continue holding down the [STOP] button until the version information will be indicated in the MASTER LEVEL METER as shown below.**



4. Release the [STOP] button.

The n8/n12 will return to its normal state.

Error messages



- If the same error message appears each time you try to update, the device may need repairing, in which case you should contact your Yamaha dealer.

Can not get FW/mLAN interface!!	No driver is installed. Make sure to install the Yamaha Steinberg FW Driver correctly.
FW device not found!! Can not open FW device!! Can not get FW port information!! FW port not found!! Can not open FW port!! Can not get FW device information!!	The computer cannot recognize the n8/n12 because the n8/n12 is not connected or the n8/n12 is powered off. Make sure to connect the n8/n12 to the computer via FireWire cable, and also make sure that the n8/n12 is turned power on in update mode.
File format error!!	Illegal data was selected.
FW communication error!!	The update program cannot completely send the data to n8/n12 due to a problem in the update process, such as disconnection of the FireWire cable, etc. Quit the nUpdate, update again by repeating the procedure from Step 1 in the "Update Procedure" section above.