



Thin is in. Thin is innovation.

Innovation can take many forms. Sometimes, less is more, in terms of innovation. The YSP-5100, for example. It's much thinner than previous models. So it matches the new slim TVs. And presents a more elegant appearance. Yet its room-filling surround sound is spectacular. Slim. Elegant. Innovative. The YSP-5100.



Digital Piano:
YAMAHA MODUS F-01

Yamaha's latest Digital Sound Projector™ provides many new great features like HD Audio decoding, 1080p-compatible HDMI (4 in/1 out), IntelliBeam, numerous listening modes, UniVolume™, AirWired™ technology for iPod/iPhone and subwoofer.

A perfect match
 for over 50" flat
 TVs and monitors.



The YSP-5100 Digital Sound Projector™ includes Accessories for iPod/iPhone wireless transmission (PDX-50TX, PDX-50BC and AC adapter for PDX-50BC).



iPod not included



Accessories for iPod/iPhone wireless transmission (PDX-50TX, PDX-50BC and AC adapter for PDX-50BC)



True HD Surround Sound

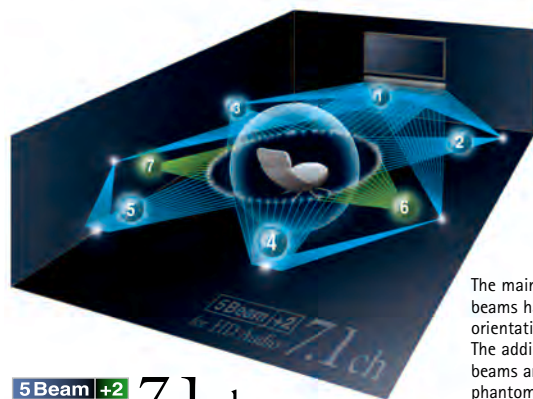
- HD Audio format decoding: Dolby TrueHD and DTS-HD Master Audio; Dolby Digital Plus and DTS-HD High Resolution Audio
- Versatile listening modes including 7-channel output capability
- Sensational multi-channel sound from BDs, DVDs and other digital sources
- 11 CINEMA DSP programmes: Three Movie, three Music and five Entertainment

Elegant, Space-Saving Design

- Built-In DSP, Speakers and Digital Amplifiers
- No need for additional speakers and cables
- Can be wall mounted or placed on a shelf or rack
- Design is more elegant, less obtrusive than multiple speaker boxes
- Thinner than previous models to match the latest slim flat screen TVs

Advanced Features

- Analogue video to HDMI digital video upconversion
- 1080p-compatible HDMI (4 in/ 1 out) with Deep Colour, X.V Colour, Auto Lip-Sync and CEC functionality
- IntelliBeam Automated System Calibration
- AirWired Technology for wireless transmission of uncompressed data
- UniVolume keeps volume during TV programmes and commercials at the same level
- iPod/iPhone connectability via PDX-50TX for remote unit
- Built-in FM tuner
- Adaptive DRC, Music Enhancer and Bass Extension
- Custom Installation functions (RS-232C/ IR in/ IR pass through out/ Extended IR)
- Preset Remote Control



The main 5-channel beams have independent orientations. The additional 2-channel beams are created with phantom technology.

5 Beam +2 7.1 ch
 for HD Audio

Main Specifications

Speakers Section	4cm x 40 beam drivers: 2.5cm x 2 balanced-dome tweeters + 11cm x 2 woofers
Digital Amplifiers	120 W total power: 2W x 40 beam drivers + 20W x 2 (woofer + tweeters)
Standby Power Consumption	0.5 W
Dimensions (W x H x D)	1200 x 212 x 90 mm
Weight	11 kg

True Surround Sound

HD Audio Decoding

The YSP-5100 ensures that you hear the best possible sound from Blu-ray Disc players, as well as from all other digital sources. It is capable of decoding the two lossless HD Audio formats (Dolby TrueHD and DTS-HD Master Audio) as well as the two lossy formats (Dolby Digital Plus and DTS HD High Resolution).



Versatile listening modes

The YSP-5100 achieves true surround sound by directing sound beams off the walls to reach the listener from various angles. The main mode is 5 BeamPlus2 for 7-channel sources. In addition, there is a wide variety of other listening modes. You can select 3 Beam + Stereo + 2, 5 Beam, 3 Beam + Stereo, 3 Beam or Stereo, depending on the type of source and your room acoustics.



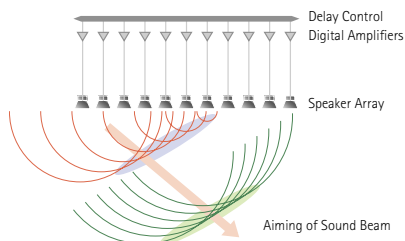
Eleven CINEMA DSP Programmes

Yamaha's ultra-sophisticated CINEMA DSP technology creates thrillingly realistic soundscapes in any room. Eleven CINEMA DSP programmes (three Movie, three Music and five Entertainment) are available.



Digital Sound Projector™ Technology

The YSP-5100 applies this sophisticated technology to precisely control the orientation of the sound by focusing it through multiple beams. The centre channel sound is heard directly, while sounds from other channels are heard after reflecting off walls. The result is true multi-channel surround sound that sounds just



like a multi-speaker system – but without the need for extra speakers!

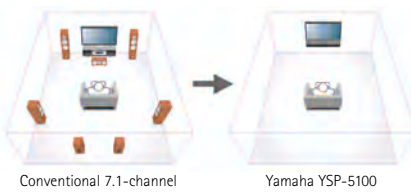
Elegant, Space-Saving Design

Built-In DSP, Speakers and Digital Amplifiers

This slim unit has everything necessary for projecting true surround sound built in: DSP for Digital Signal Processor, 40 beam drivers, two woofers, two tweeters and digital amplifiers. The two built-in tweeters ensure high stereo sound quality. No other receiver, amplifier or speakers are necessary, making the system extremely compact and economical. This also makes it handy for use in a different room (zone) in a custom multi-zone system. What's more, the shape is even thinner (90mm depth) than previous models.



YSP-5100 includes 40 beam drivers, two woofers, two tweeters and a digital amplifiers



Conventional 7.1-channel system with seven speakers.

Yamaha YSP-5100

Advanced Features

1080p-Compatible HDMI (4 In/1 Out)

The YSP-5100 provides HDMI connections (4 in/1 out), with support for 1080p resolution. You can connect multiple HDMI sources and enjoy the highest possible video quality when using a 1080p monitor. It is also capable of repeating 1080p/24fps signals from HDMI input to output, maintaining the superior image quality from Blu-ray Disc players and HDTV set top boxes. HDMI also provides the benefits of Deep Colour, x.v.Colour and Auto Lip-Sync.



YSP-5100 rear panel offers HDMI (4 in/1 out) interface, 2 optical, 1 coaxial digital and 2 analogue audio inputs, 1 component video input, 1 composite video input and 1 output, IR in and IR pass through out. RS-232C interface for Custom Installation. Subwoofer output, System connector with FM antenna terminal and Terminal for detachable AC cable.

Analogue Video to HDMI Digital Video Upconversion

The YSP-5100 provides upconversion of video composite and component signals to HDMI. The signal can then be output via a single HDMI cable to a monitor for enjoying high-definition video quality.

IntelliBeam Automated System Calibration

This Yamaha exclusive feature ensures optimum multi-channel sound reproduction with accurate image location. By monitoring and analysing the sound with the microphone included with the YSP-5100, IntelliBeam automatically sets the best beam angles, while optimising the level and frequency response of each beam. It also offers Direct Start function via remote unit. This makes initial setup both extremely simple and acoustically perfect.



UniVolume

This welcome feature, made possible by Yamaha-developed technology, maintains a consistent volume level between different channels, programmes, commercials and input sources. It can be switched on and off.



HDMI CEC Functionality

When the YSP-5100 is connected to a CEC-compatible TV, such as a Panasonic VIERA Link TV, the YSP-5100 will turn on and off together with the TV, and you can use the TV remote unit to control the YSP-5100 volume. With CEC engaged, signals will pass through the YSP-5100 even if it is off. CEC also provides advanced functionality with other components.

Music Enhancer

When music is encoded into a digitally compressed format like MP3, the frequency response suffers. This function restores what was lost, so your music always sounds the way it should.



Custom Installation functions

- RS-232C
- IR in and IR pass through out
- Extended IR



Accessories for Added Convenience

AirWired Technology for Wireless Connections

Thanks to Yamaha's AirWired technology, you can use your YSP-5100 with an iPod and subwoofer without having to connect any cables. The AirWired link transmits uncompressed data (linear PCM) so there is no loss of signal data, unlike systems that use Bluetooth technology to send compressed data. This ensures maximum sound quality.

The PDX-50TX gives you wireless connection capability to your iPod. It lets you use the iPod as a remote control while listening to your iPod music, and provides synchronised power on/off. In addition, the iPod charges when it is in the PDX-50BC. The SWK-W10 allows the wireless connection of any subwoofer, highly recommended for boosting bass sound. Both of these kits can be used together; when doing so, turning on the iPod automatically turns on the YSP-5100 and the subwoofer.



Supplied Accessories for iPod/iPhone wireless transmission (PDX-50TX, PDX-50BC and AC adapter for PDX-50BC)

<PDX-50TX Specifications>

- Dimensions (W x H x D): 45.4 x 21.6 x 81 mm • Weight: 29 g

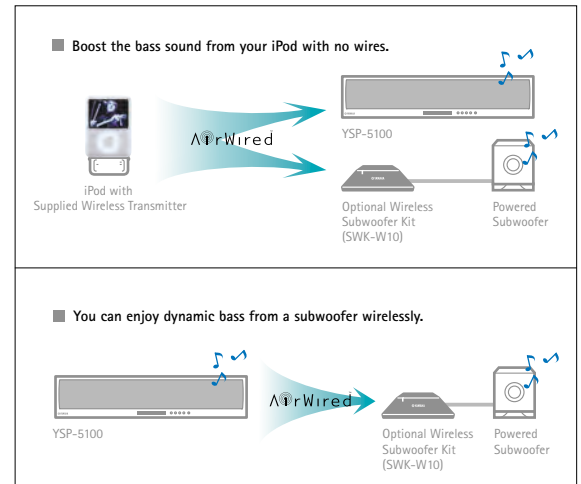
<PDX-50BC Specifications>

- Dimensions (W x H x D): 56 x 20.5 x 74 mm • Weight: 29.5 g



Optional Accessory for subwoofer wireless reception (SWK-W10)

- Dimensions (W x H x D): 120 x 53.5 x 120.5 mm
- Weight: 0.8 kg



Optional Space-Saving Pedestals

If your TV is not mounted on the wall, Yamaha offers two convenient, space-saving ways to integrate it with your YSP-5100. The YTS-T500 supports both units on top of a rack, table, etc. The YTS-F500 is a floorstanding pedestal.

Integrated TV/Soundbar Pedestal



YTS-T500 Integrated TV/Soundbar Pedestal

- Dimensions (W x H x D): 650 x 867 x 398 mm • Weight: 16 kg
- Supports up to 52" (VESA standard), 45 kg TVs

Integrated TV/Soundbar Floor Stand



YTS-F500 Integrated TV/Soundbar Floor Stand

- Dimensions (W x H x D): 670 x 1166 x 515 mm • Weight: 25 kg
- Supports up to 58" (VESA standard), 45kg TVs

Optional Wall Mount Bracket



SPM-K30

Optional Wall Mount Bracket

- Dimensions (W x H x D): 630~730 (W) x 112 (H) x 19~23 mm(D)*
- Weight: 1.6kg
- * Dimensions can be adjusted to fit your YSP.

• CINEMA DSP, IntelliBeam, AirWired and UniVolume are trademarks of Yamaha Corporation. • Digital Sound Projector and  are trademarks of Cambridge Mechatronics Ltd. • HDMI, the HDMI logo and High-Definition Multimedia Interface are trademarks or registered trademarks of HDMI Licensing LLC. • Dolby and the double-D symbol are registered trademarks of Dolby Laboratories. • DTS is a registered trademark and the DTS logos, Symbol, DTS-HD and DTS-HD Master Audio are trademark of DTS, Inc. • "Made for iPod" means that an electronic accessory has been designed to connect specifically to iPod and has been certified by the developer to meet Apple performance standards. • "Works with iPhone" means that an electronic accessory has been designed to connect specifically to iPhone and has been certified by the developer to meet Apple performance standards. • Apple is not responsible for the operation of this device or its compliance with safety and regulatory standards. • iPod is a trademark of Apple Inc., registered in the U.S. and other countries. • iPhone is a trademark of Apple Inc. • "x.v.Colour" is a trademark. • Product designs and specifications are subject to change without notice.