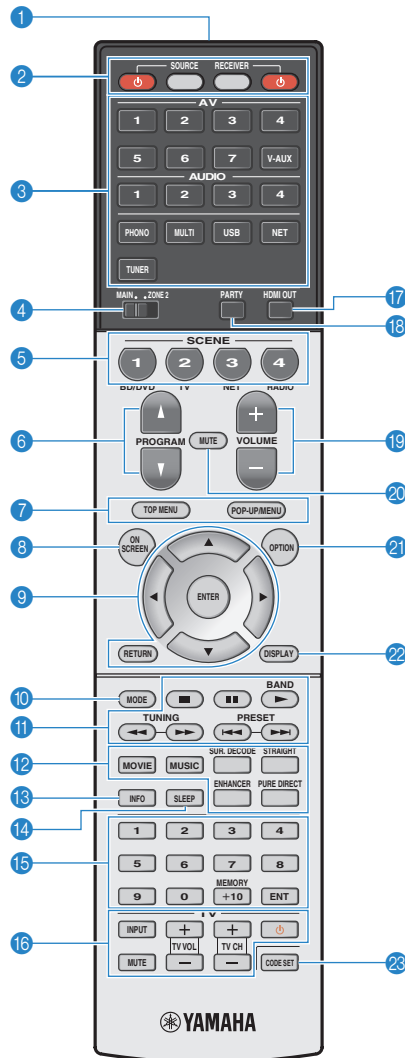


Remote control functions



1 Remote control signal transmitter

Transmits infrared signals.

2 SOURCE key

Turns on/off an external device.

SOURCE key

Sets the remote control to operate external devices (p.3). This key lights up in green after pressed.

RECEIVER key

Sets the remote control to operate the unit (p.3). This key lights up in orange after pressed.

RECEIVER key

Turns on/off (standby) the unit.

3 Input selection keys

Select an input source for playback.

4 MAIN/ZONE2 switch

Changes the zone (main zone or Zone2) that is controlled by the remote control.

5 SCENE keys

Select the registered input source, sound program, and various settings with one touch. Also, turns on the unit when it is in standby mode.

6 PROGRAM keys

Select a sound program.

7 External device operation keys

Select menus for external devices.

8 ON SCREEN key

Displays the on-screen menu on the TV.

9 Menu operation keys

Cursor keys Select a menu or a parameter.

ENTER Confirms a selected item.

RETURN Returns to the previous screen.

10 MODE key

Switches the iPod operation modes.

11 Radio keys

Operate the FM/AM radio when "TUNER" is selected as the input source.

BAND Switches between FM and AM radio.

PRESET Select a preset station.

TUNING Select the radio frequency.

External device operation keys

Let you play back and perform other operations for external devices when an input source other than "TUNER" is selected.

12 Sound mode keys

Select a sound mode.

13 INFO key

Selects the information displayed on the front display.

14 SLEEP key

Switches the unit to standby mode automatically after a specified period of time has elapsed (sleep timer). Press repeatedly to set the time (120 min, 90 min, 60 min, 30 min, off).

15 Numeric keys

Let you enter numerical values, such as radio frequencies.

MEMORY key

Registers FM/AM radio stations as presets.

16 TV operation keys

Let you select TV input and volume, and perform other TV operations.

17 HDMI OUT key

Selects HDMI OUT jacks to be used for video/audio output.

18 PARTY key

Turns on/off the party mode.

19 VOLUME keys

Adjust the volume.

20 MUTE key

Mutes the audio output.

21 OPTION key

Displays the option menu.

22 DISPLAY key

Displays status information on the TV.

23 CODE SET key

Registers remote control codes of external devices on the remote control.



Controlling external devices with the remote control

You can use the unit's remote control to operate external devices (such as BD/DVD players) if you have registered the remote control code of the external device.



- You cannot control an external device that does not have a remote control sensor.
- Ensure that the remote control ID of the external device is set to "ID1". If any other ID is selected, the remote control operations may not work properly.
- If the unit's remote control is without batteries for more than 2 minutes, the registered codes may be cleared. If this happens, insert new batteries and register the codes again.
- Under the unit's default settings, the amplifier code (Yamaha: 5098) is set for all the input selection keys. With this setting, you can control HDMI Control-compatible devices connected to the unit with the remote control. (This function may not work depending on the specification of the external device.)

Registering the remote control code for a TV

You can use the unit's remote control to operate a TV if you have registered its remote control code.



- You can also register your TV's remote control code to the unit's input selection keys. This would allow you to use the cursor keys or numeric keys to operate the TV (this function may not be available on some TV models).

1 See "List of remote control codes" (p.6) to find your TV's remote control code.



- If there are multiple remote control codes, register the first code in the list. If that does not work, try the other codes.

2 Press CODE SET.

SOURCE blinks twice.

Perform each of the following steps within 1 minute. Otherwise, the setting will be canceled. If this happens, repeat from Step 2.

3 Press TV .


4 Use the numeric keys to enter the 4-digit remote control code.

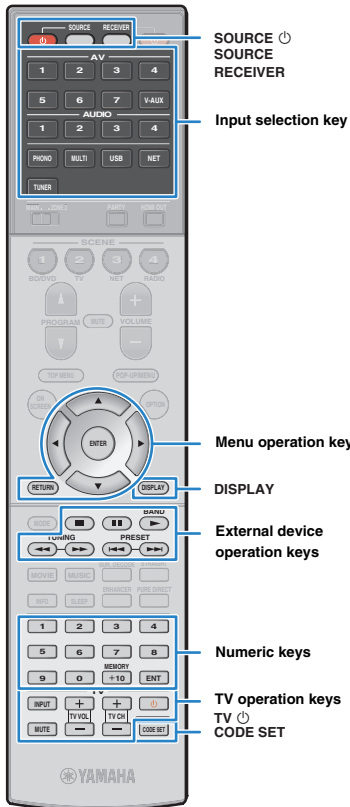
Once the remote control code is successfully registered, SOURCE blinks twice.

If it blinks six times, registration has failed. Repeat from Step 2.

TV operations

Once you have registered the remote control code for your TV, you can control it using the TV operation keys, regardless of the input source selected on the unit.

| | | |
|-------------------|--|--------------------------------------|
| | INPUT | Switches the video inputs of the TV. |
| | MUTE | Mutes the audio output of the TV. |
| TV operation keys | TV VOL | Adjust the volume of the TV. |
| | TV CH | Switch the channels of the TV |
| | TV  | Turns on/off the TV. |



Registering the remote control codes for playback devices

You can use the unit's remote control to operate playback devices if you have registered their remote control codes. You can also use the input selection keys to change the playback devices that are controlled by the remote control, because their remote control codes are assigned to the input selection keys.

1 See “List of remote control codes” (p.6) to find the remote control code for your playback device.



- If there are multiple remote control codes, register the first code in the list. If that does not work, try the other codes.

2 Press CODE SET.

SOURCE blinks twice.

Perform each of the following steps within 1 minute. Otherwise, the setting will be canceled. If this happens, repeat from Step 2.

3 Press the input selection key.

For example, press AV 1 to set the remote control code for the playback device connected to the AV 1 jack.

4 Use the numeric keys to enter the 4-digit remote control code.

Once the remote control code is registered successfully, SOURCE blinks twice.

If it blinks six times, registration has failed. Repeat from Step 2.



- For details on how to register a remote control code to a SCENE key, see “Changing the external device assigned to the SCENE keys” (p.4)

Playback device operations

Once you have registered the remote control code for your playback device, you can control it using the following keys after selecting the input source or scene.

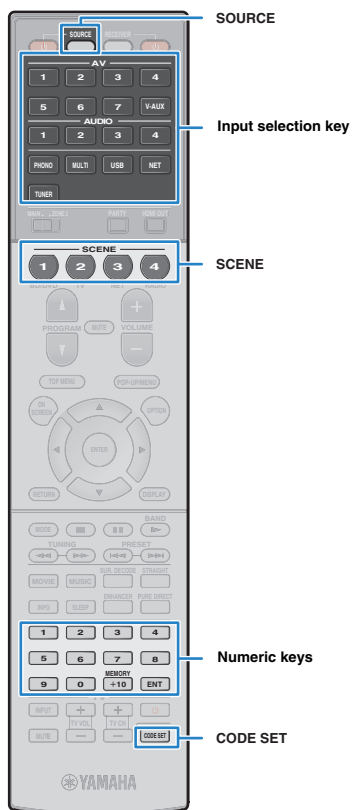


- By pressing SOURCE or RECEIVER, you can switch the devices (the unit or external device) that are operated by the menu operation keys, DISPLAY and numeric keys. You can operate the unit after pressing RECEIVER (lights up in orange), and an external device after pressing SOURCE (lights up in green). For example, if you register the remote control code of your external device on TUNER, you can operate the unit's built-in FM/AM radio after pressing RECEIVER and the external device after pressing SOURCE.

| | | |
|--------------------------------|--------------|--|
| SOURCE | | Turns on/off the playback device. |
| Menu operation keys | Cursor keys | Select an item. |
| | ENTER | Confirms a selected item. |
| DISPLAY | RETURN | Returns to the previous screen. |
| | DISPLAY | Switches information on the display. |
| External device operation keys | TOP MENU | Displays the top menu. |
| | POP-UP/MENU | Displays the pop-up menu. |
| | | Stops playback. |
| | | Stops playback temporarily. |
| | | Starts playback of the selected song/video. |
| | | Searches forward/backward (by holding down). |
| External device operation keys | | Skips forward/backward. |
| | Numeric keys | Enter numerical values. |
| TV operation keys | | Control the TV (p.2). |



- These keys work only if the corresponding function is available on your playback device and if the device can be operated with an infrared remote control.



Changing the external device assigned to the SCENE keys

If you want to control your playback device after selecting a scene, follow the procedure below.

- 1** If you have not registered the remote control code for the device yet, follow “Registering the remote control codes for playback device” (p.3).
- 2** Hold down the corresponding SCENE key and input selection key together for more than 3 seconds.

Once the setting is successfully completed, the SOURCE indicator blinks twice.

If it blinks six times, the setting has failed. Repeat step 2.

Resetting remote control codes

You can reset a remote control code registered to each input selection key.

- 1** Press **CODE SET**.
SOURCE blinks twice.
Perform each of the following steps within 1 minute.
Otherwise, the setting will be canceled. If this happens, repeat from Step 1.
- 2** Press the input selection key.
- 3** Use the numeric keys to enter “5098”.

Once the remote control code is reset successfully, SOURCE blinks twice.

If it blinks six times, resetting has failed. Repeat from Step 1.

To reset the remote control to factory default settings

- ① Press CODE SET.
- ② Press RECEIVER.
- ③ Use the numeric keys to enter “9981”.



Changing the remote control ID of the remote control

Change the remote control's ID so that it matches the unit's remote control ID.



- Perform each of the following steps within 1 minute. Otherwise, the setting will be automatically canceled.

- 1 Press CODE SET.**
- 2 Press RECEIVER.**
- 3 Use the numeric keys to enter “5019” (ID1) or “5020” (ID2).**

Once the remote control ID is registered successfully, the SOURCE indicator blinks twice.

If it blinks six times, registration failed. Repeat from Step 1.



- The registered remote control codes are not cleared even if you change the remote control ID.
- You can change the unit's remote control ID in the “ADVANCED SETUP” menu. For details, refer to “Owner’s Manual”.

List of remote control codes

TV

| | | | | | | | |
|----------------|--|----------------|--|----------------------|--|----------------|--|
| A.R. Systems | 0320 | Arthur Martin | 0321 | Bush | 0269, 0282, 0283, 0304, 0320, 0323, 0328, 0332, 0340, 0343, 0344, 0346, 0348, 0349, 0350, 0372, 0382, 0463, 0470, 0472 | Crown | 0058, 0161, 0171, 0179, 0320, 0323, 0343, 0349, 0350, 0351 |
| Acme | 0342 | ASA | 0339, 0347 | byd:sign | 0093 | CS Electronics | 0277, 0340, 0342 |
| Acura | 0323, 0343 | Asberg | 0171, 0320, 0350 | Candle | 0008, 0026, 0050, 0057 | CTC Clatronic | 0341 |
| ADC | 0337 | Astra | 0343 | Capsonic | 0337 | CTX | 0205 |
| Admiral | 0054, 0178, 0336, 0337, 0339, 0346, 0347 | Asuka | 0277, 0282, 0337, 0340, 0342 | Carena | 0320 | Curtis Mathes | 0007, 0008, 0010, 0019, 0021, 0026, 0049, 0050, 0178 |
| Advent | 0158 | Atlantic | 0277, 0320, 0342, 0349, 0350 | Carnivale | 0050 | CXC | 0058, 0179 |
| Adventura | 0057 | Atori | 0323, 0343 | Carrefour | 0344 | Cybertron | 0340 |
| Adyson | 0277, 0282, 0342 | Auchan | 0321 | Carver | 0010 | Cytron | 0152 |
| Agashi | 0277, 0282 | Audiosonic | 0161, 0282, 0320, 0340, 0342, 0343, 0349, 0350 | Cascade | 0320, 0323, 0343 | Daewoo | 0007, 0008, 0026, 0037, 0053, 0167, 0266, 0275, 0277, 0282, 0315, 0320, 0323, 0331, 0335, 0342, 0343, 0350, 0381, 0465 |
| Agazi | 0337 | AudioTon | 0161, 0282, 0342 | Casio | 0367 | Dainichi | 0277, 0340 |
| Aiko | 0277, 0282, 0320, 0323, 0342, 0343 | Ausind | 0171 | Cathay | 0320, 0349, 0350 | Dansai | 0277, 0282, 0320, 0337, 0349, 0350 |
| Aim | 0320 | Autovox | 0171, 0282, 0337, 0339, 0342 | CCE | 0183, 0282 | Dantax | 0161, 0349 |
| Aiwa | 0078, 0379 | Aventura | 0051 | Celebrity | 0055, 0107 | Dawa | 0320 |
| Akai | 0050, 0055, 0109, 0159, 0181, 0277, 0282, 0320, 0323, 0340, 0343, 0349, 0350 | Awa | 0277, 0282 | Celera | 0039 | Daytron | 0007, 0008, 0026, 0323, 0343 |
| Akiba | 0320, 0340 | Axion | 0156 | Centurion | 0320, 0349, 0350 | De Graaf | 0346 |
| Akura | 0320, 0323, 0337, 0340 | Baird | 0282 | Century | 0339 | Decca | 0282, 0320, 0342, 0349, 0350 |
| Alaron | 0277 | Bang & Olufsen | 0180, 0339 | CGE | 0161, 0171 | Dell | 0145, 0245 |
| Alba | 0161, 0277, 0320, 0323, 0340, 0342, 0343, 0344, 0349, 0351, 0372, 0382 | Basic Line | 0282, 0320, 0323, 0340, 0343, 0350 | Changhong | 0039 | Denver | 0358, 0362 |
| Albatron | 0140 | Bastide | 0282, 0342 | Chimei | 0273 | Desmet | 0320, 0349, 0350 |
| Alcyon | 0171 | Baur | 0320, 0349 | Cimline | 0323, 0343 | Diamant | 0320 |
| Alleron | 0059 | Bazin | 0282 | Citizen | 0007, 0008, 0026, 0050, 0058 | Diamond | 0277 |
| Allorgan | 0282 | Beko | 0161, 0269, 0294, 0302, 0311, 0320, 0328, 0351 | City | 0323, 0343 | DiamondVision | 0135, 0143 |
| Allstar | 0320, 0350 | Belcor | 0008 | Clarion | 0179 | Dimensia | 0049 |
| America Action | 0179 | Bell & Howell | 0019, 0054 | Clarivox | 0349 | Disney | 0219 |
| AMOi | 0276 | Benq | 0097, 0242, 0361 | Clatronic | 0161, 0171, 0282, 0320, 0323, 0337, 0340, 0342, 0343, 0350, 0351 | Dixi | 0282, 0320, 0323, 0343, 0349, 0350 |
| Amplivision | 0161, 0282, 0321, 0342 | Beon | 0320, 0349, 0350 | CMS | 0277 | Dragon Vision | 0461, 0498 |
| Amstrad | 0320, 0323, 0337, 0340, 0343 | Best | 0161 | CMS Hightec | 0282 | DTS | 0323, 0343 |
| Amtron | 0058 | Bestar | 0161, 0320, 0350 | Coby | 0197 | Dual | 0282, 0320, 0342 |
| Anam | 0179, 0343 | BGH | 0400 | Colorlyme | 0008, 0026 | Dual-Tec | 0342, 0343 |
| Anam National | 0052, 0058 | Binatone | 0282, 0342 | Commercial Solutions | 0021 | Dumont | 0008, 0030, 0062, 0282, 0339, 0341, 0342 |
| Anglo | 0323, 0343 | Blue Sky | 0320, 0340 | Concerto | 0008, 0026 | Durabrand | 0031, 0051, 0179, 0215 |
| Anitech | 0171, 0320, 0323, 0337, 0343 | Blue Star | 0348 | Concorde | 0323, 0343 | Dux | 0349 |
| Ansonic | 0161, 0168, 0320, 0323, 0341, 0343 | Boots | 0282, 0342 | Condor | 0161, 0277, 0320, 0323, 0342, 0350, 0351 | Dwin | 0178 |
| AOC | 0008, 0026, 0050, 0053 | BPL | 0320, 0348 | Contec | 0179, 0277, 0323, 0342, 0343, 0344 | Dynatron | 0320, 0349, 0350 |
| Apex | 0039, 0111, 0217 | Bradford | 0058, 0179 | Contec/Cony | 0012, 0058 | Dynex | 0228, 0231 |
| Arcam | 0277, 0282 | Brandt | 0322, 0345 | Continental Edison | 0345 | EIZO | 0509 |
| Arcam Delta | 0342 | Brilliant | 0182 | Cosmel | 0323, 0343 | Elbe | 0161, 0168, 0282, 0320 |
| Aristona | 0320, 0349, 0350 | Brinkmann | 0320 | Craig | 0058, 0179 | Electa | 0348 |
| | | Brionvega | 0320, 0339, 0349, 0350 | Crosley | 0010, 0037, 0171, 0339 | ELECTRO TECH | 0343 |
| | | Britannia | 0277, 0282, 0342 | | | | |
| | | Brockwood | 0008 | | | | |
| | | Broksonic | 0109, 0179 | | | | |
| | | Bruns | 0339 | | | | |
| | | BTC | 0340 | | | | |

| | | | | | | | |
|------------------|--|-----------------|--|-----------------|--|----------------|---|
| Electroband | 0055, 0107 | Fujitsu Siemens | 0504, 0505, 0507, 0510, 0511 | Harwood | 0320, 0323 | Intervision | 0161, 0282, 0320, 0337, 0341, 0342 |
| Electrograph | 0176 | Funai | 0051, 0058, 0059, 0112, 0113, 0115, 0118, 0119, 0179, 0337, 0488, 0489 | Havermy | 0178 | Irradio | 0171, 0320, 0323, 0340, 0343, 0349, 0350 |
| Electrohomb | 0008, 0026, 0052, 0055 | | | HCM | 0282, 0320, 0323, 0337, 0342, 0343, 0348 | Isukai | 0320, 0340 |
| Element | 0230 | | | Hema | 0282, 0323 | ITC | 0282, 0342 |
| Elin | 0277, 0320, 0323, 0342, 0349, 0350 | Futuretech | 0058, 0179 | Hewlett Packard | 0192 | ITS | 0277, 0320, 0340, 0348, 0350 |
| Elite | 0320, 0340, 0350 | Galaxi | 0320, 0351 | Higashi | 0277 | ITT | 0343, 0347 |
| Elman | 0341 | Galaxis | 0161, 0320 | HiLine | 0320 | ITV | 0320, 0343, 0349 |
| Elta | 0277, 0323, 0343 | Gateway | 0176, 0177, 0241 | Hinari | 0320, 0323, 0340, 0343, 0344, 0349, 0350 | Janeil | 0057 |
| Emerson | 0000, 0007, 0008, 0012, 0013, 0019, 0026, 0031, 0037, 0051, 0058, 0059, 0161, 0179, 0320, 0339 | GBC | 0323, 0343, 0344 | Hisawa | 0321, 0340, 0348 | JBL | 0010 |
| | | GE | 0008, 0021, 0023, 0026, 0027, 0031, 0034, 0049, 0052, 0056, 0209 | Hisense | 0247 | JC Penney | 0007, 0008, 0026, 0027, 0049, 0053, 0056 |
| Emprex | 0154 | Geant Casino | 0321 | Hitachi | 0008, 0012, 0026, 0066, 0084, 0092, 0093, 0120, 0172, 0173, 0255, 0270, 0271, 0282, 0320, 0335, 0338, 0342, 0344, 0346, 0347, 0365, 0382, 0448, 0456, 0467, 0482, 0484, 0487 | JCB | 0055, 0107 |
| Envision | 0008, 0026, 0050 | GEC | 0282, 0320, 0342, 0347, 0349, 0350 | Hornyphon | 0320, 0350 | Jensen | 0008, 0026 |
| Epson | 0155, 0206, 0359 | Geloso | 0323, 0343, 0346 | Hoshai | 0340 | JVC | 0012, 0014, 0015, 0056, 0064, 0065, 0067, 0169, 0174, 0297, 0314, 0344, 0350, 0375 |
| Erres | 0320, 0349, 0350 | General Technic | 0323, 0343 | Huanyu | 0277, 0342 | Kaisui | 0277, 0282, 0320, 0323, 0340, 0342, 0343, 0348 |
| ESA | 0051 | Genexxa | 0320, 0340, 0347, 0350 | Hygashi | 0277, 0282, 0342 | Kamosonic | 0342 |
| ESC | 0282 | GFM | 0128, 0227 | Hypson | 0277, 0282, 0323, 0342, 0343 | Kamp | 0277, 0342 |
| Etron | 0343 | Giant | 0282 | Hypson | 0282, 0320, 0321, 0337, 0342, 0348, 0349, 0350 | Kapsch | 0347 |
| Eurofeel | 0282 | Gibralter | 0008, 0030, 0050, 0062 | Hyundai | 0141 | Karcher | 0161, 0320, 0342, 0343, 0349 |
| Euro-Feel | 0337 | GoldHand | 0277 | Iberia | 0320 | Kawasho | 0008, 0026, 0055, 0277 |
| Euroline | 0349 | Goldline | 0320 | ICE | 0277, 0282, 0320, 0323, 0337, 0340, 0342, 0343, 0350 | KEC | 0179 |
| Euroman | 0161, 0277, 0282 | GoldStar | 0007, 0008, 0012, 0026, 0031, 0050, 0053, 0161, 0277, 0282, 0320, 0323, 0342, 0343, 0346, 0349, 0350 | ICeS | 0277 | Kendo | 0161, 0320, 0341, 0346 |
| Euromann | 0320, 0337, 0342, 0350 | Goodmans | 0246, 0272, 0282, 0320, 0323, 0337, 0343, 0344, 0349, 0350, 0462, 0473, 0477 | Ilo | 0148, 0153 | Kenwood | 0008, 0026, 0050 |
| Europhon | 0277, 0282, 0320, 0341, 0342, 0350 | Gorenje | 0161, 0351 | IMA | 0058 | KIC | 0282 |
| Expert | 0321 | GPM | 0340 | Imperial | 0161, 0171, 0320, 0347, 0350, 0351 | Kingsley | 0277, 0342 |
| Exquisit | 0320 | GPX | 0129 | Indiana | 0320, 0349, 0350 | KLH | 0039 |
| Fenner | 0323, 0343 | Gradiente | 0240 | Infinity | 0010 | Kloss Novabeam | 0057, 0058 |
| Ferguson | 0322, 0345, 0349 | Graetz | 0347 | InFocus | 0250, 0327, 0363, 0479, 0508 | Kneissel | 0161, 0168, 0320 |
| Fidelity | 0277, 0320, 0342, 0346 | Granada | 0171, 0282, 0320, 0321, 0342, 0344, 0346, 0349, 0350 | Ingelen | 0347 | Kolster | 0320, 0350 |
| Filsai | 0282 | Grandin | 0340, 0343, 0348, 0349 | Ingersol | 0323, 0343 | Konka | 0340 |
| Finlandia | 0346 | Gronic | 0282 | Initial | 0153 | Korpel | 0320, 0349, 0350 |
| Finlux | 0171, 0282, 0320, 0339, 0341, 0342, 0349, 0350 | Grundig | 0160, 0161, 0171, 0310, 0320 | Inno Hit | 0171, 0282, 0320, 0323, 0340, 0342, 0343, 0349, 0350 | Korting | 0161, 0339 |
| FIRST LINE | 0342, 0343, 0350 | Grunpy | 0058, 0059, 0179 | Innovation | 0337, 0343 | Kosmos | 0320 |
| Firstline | 0277, 0282, 0320, 0323 | Haier | 0157, 0233 | Insignia | 0131, 0228, 0236, 0238 | Koyoda | 0343 |
| Fisher | 0019, 0161, 0282, 0339, 0342, 0344, 0351 | Hallmark | 0008, 0026, 0031 | Inteq | 0030 | KTV | 0007, 0050, 0058, 0179, 0183, 0282, 0342 |
| Flint | 0320, 0350 | Hampton | 0277, 0282, 0342 | Interactive | 0161 | Kyoto | 0277, 0282 |
| Formenti | 0171, 0277, 0336, 0339, 0342, 0349 | Hanseatic | 0161, 0168, 0282, 0320, 0323, 0342, 0343, 0344, 0349, 0350 | Interbuy | 0323, 0343 | Lasat | 0161 |
| Formenti/Phoenix | 0277 | Hantarex | 0320, 0323, 0343 | Interfunk | 0161, 0320, 0339, 0347, 0349, 0350 | Lenco | 0323, 0343 |
| Fortress | 0336, 0339 | Hantor | 0320 | International | 0277 | Lenoir | 0323, 0342, 0343 |
| Fraba | 0161, 0320 | Harman/Kardon | 0010 | | | Leyco | 0320, 0337, 0349, 0350 |
| Friac | 0161 | Harvard | 0058, 0179 | | | LG | 0031, 0053, 0066, 0116, 0117, 0140, 0161, 0164, 0175, 0195, 0269, 0277, 0282, 0300, 0309, |
| Frontech | 0282, 0323, 0337, 0343, 0346, 0347 | | | | | | |
| Fujitsu | 0059, 0069, 0074, 0075, 0282 | | | | | | |
| Fujitsu General | 0282 | | | | | | |

| | | | | | | | |
|--------------|--|-----------------|--|--------------|--|----------------------|--|
| | 0317, 0320, 0323, 0328, 0342, 0343, 0346, 0349, 0350, 0366, 0368, 0377, 0466, 0471, 0478 | Memphis | 0323, 0343 | Novatronic | 0320 | Phoenix | 0161, 0277, 0320, 0339, 0349, 0350 |
| LG/GoldStar | 0164 | Mercury | 0320, 0323 | Oceanic | 0321, 0347 | Phonola | 0277, 0320, 0339, 0349, 0350 |
| Liesenk | 0349 | Metz | 0339 | Okano | 0161, 0320, 0351 | Pilot | 0007, 0008, 0050 |
| Liesenkotter | 0320 | MGA | 0008, 0026, 0031, 0050, 0053 | Olevia | 0102, 0199, 0200, 0207, 0222 | Pioneer | 0008, 0026, 0094, 0095, 0161, 0320, 0345, 0347, 0349, 0350, 0458, 0480 |
| Life | 0337, 0343 | Micromaxx | 0337, 0343 | ONCEAS | 0342 | Plantron | 0320, 0323, 0337, 0350 |
| Lifetec | 0320, 0323, 0337, 0343 | Microstar | 0337, 0343 | Onwa | 0058, 0179 | Playsonic | 0282 |
| Lloyds | 0323 | Midland | 0007, 0021, 0023, 0027, 0030, 0056, 0062 | Opera | 0320 | Polaroid | 0039, 0142, 0202, 0234 |
| Loewe | 0161, 0168, 0265, 0320, 0330, 0352 | Minerva | 0171 | Oppo | 0130 | Poppy | 0323, 0343 |
| Loewe Opta | 0339, 0349, 0350 | Minoka | 0320, 0350 | Optimus | 0017, 0019 | Portland | 0007, 0008, 0026, 0053 |
| Logik | 0054 | Mintek | 0153 | Optoma | 0144 | Prandoni-Prince | 0171, 0346 |
| Luma | 0320, 0323, 0346, 0349 | Mitsubishi | 0008, 0026, 0031, 0053, 0066, 0084, 0093, 0098, 0150, 0178, 0289, 0320, 0339, 0344, 0350, 0376 | Optonica | 0178 | Precision | 0282, 0342 |
| Lumatron | 0282, 0320, 0346, 0349, 0350 | | | Orbit | 0320, 0350 | Prima | 0157, 0243, 0323, 0343, 0347 |
| Lux May | 0350 | | | Orion | 0043, 0146, 0283, 0320, 0323, 0328, 0343, 0349, 0350 | Princeton | 0140 |
| Luxman | 0008, 0026 | Mivar | 0161, 0168, 0171, 0277, 0282, 0342 | Orline | 0320 | Prism | 0023, 0056 |
| Luxor | 0282, 0342, 0346 | Monivision | 0140 | Osaki | 0282, 0320, 0337, 0340, 0342 | Profex | 0323, 0343 |
| LXI | 0010, 0019, 0021, 0026, 0027, 0031, 0049, 0111 | Montgomery Ward | 0054 | Oso | 0340 | Profi-Tronic | 0320, 0350 |
| M Electronic | 0342, 0343, 0345, 0347, 0349, 0350 | Motion | 0171 | Otto Versand | 0282, 0320, 0336, 0342, 0344, 0348, 0349, 0350 | Proline | 0320, 0350 |
| MAG | 0096 | Motorola | 0052, 0178 | Pael | 0277, 0342 | Proscan | 0021, 0027, 0049 |
| Magnadyne | 0339, 0341, 0349 | MTC | 0008, 0026, 0050, 0053, 0161, 0277 | Palladium | 0161, 0282, 0320, 0342, 0351 | Prosonic | 0161, 0277, 0282, 0320, 0342, 0349 |
| Magnafon | 0171, 0277, 0341, 0342 | Multi System | 0349 | Panasonic | 0277, 0282, 0320, 0323, 0337, 0342, 0343 | Protech | 0282, 0337, 0341, 0342, 0343, 0349, 0350 |
| Magnavox | 0008, 0009, 0010, 0013, 0026, 0032, 0033, 0048, 0050, 0128, 0211, 0212, 0224, 0226, 0239 | Multitech | 0058, 0161, 0179, 0183, 0277, 0282, 0320, 0323, 0341, 0342, 0343, 0344, 0346, 0349 | Panaviaison | 0320 | Proton | 0008, 0012, 0026, 0031 |
| Magnum | 0337, 0343 | Murphy | 0277, 0342 | Pathe Cinema | 0161, 0168, 0277, 0321, 0342 | Prottron | 0196 |
| Majestic | 0054 | NAD | 0026, 0031, 0111 | Pausa | 0323, 0343 | PROVIEW | 0096, 0246 |
| Mandor | 0337 | Naonis | 0346 | Penney | 0021, 0023, 0031, 0050, 0111 | Provision | 0320, 0349 |
| Manesth | 0282, 0320, 0337, 0342, 0349, 0350 | NEC | 0008, 0026, 0050, 0052, 0053, 0072, 0103, 0282, 0344 | Perdio | 0277, 0320 | Pulsar | 0008, 0030, 0062 |
| Marantz | 0008, 0010, 0026, 0050, 0204, 0320, 0349, 0350 | Neckermann | 0161, 0282, 0320, 0339, 0342, 0346, 0349, 0350, 0351 | Perfekt | 0320 | Pye | 0256, 0320, 0349, 0350, 0378 |
| Marelli | 0339 | NEI | 0320, 0349, 0350 | Philco | 0008, 0009, 0010, 0012, 0026, 0050, 0052, 0053, 0161, 0171, 0320, 0339 | Pymi | 0323, 0343 |
| Mark | 0277, 0282, 0320, 0323, 0349, 0350 | Net-TV | 0176 | Philharmonic | 0282, 0342 | Quandra Vision | 0321 |
| Masuda | 0282 | Neufunk | 0320, 0323 | Philips | 0008, 0009, 0010, 0011, 0012, 0032, 0048, 0049, 0052, 0122, 0128, 0134, 0186, 0187, 0213, 0221, 0224, 0226, 0239, 0256, 0257, 0259, 0261, 0263, 0267, 0280, 0281, 0287, 0296, 0299, 0301, 0303, 0305, 0313, 0319, 0320, 0324, 0333, 0339, 0342, 0349, 0350, 0353, 0357, 0360, 0380, 0383, 0452, 0459, 0460 | Quasar | 0017, 0023, 0052, 0056 |
| Matsui | 0282, 0320, 0323, 0342, 0343, 0344, 0346, 0349, 0350, 0455 | New Tech | 0343, 0350 | Perfekt | 0320 | Quelle | 0282, 0320, 0337, 0342, 0349, 0350 |
| Matsushita | 0017 | New World | 0340 | Philco | 0008, 0009, 0010, 0012, 0026, 0050, 0052, 0053, 0161, 0171, 0320, 0339 | Questa | 0344 |
| Maxent | 0147, 0176 | NewTech | 0282, 0320, 0323 | Philips | 0008, 0009, 0010, 0011, 0012, 0032, 0048, 0049, 0052, 0122, 0128, 0134, 0186, 0187, 0213, 0221, 0224, 0226, 0239, 0256, 0257, 0259, 0261, 0263, 0267, 0280, 0281, 0287, 0296, 0299, 0301, 0303, 0305, 0313, 0319, 0320, 0324, 0333, 0339, 0342, 0349, 0350, 0353, 0357, 0360, 0380, 0383, 0452, 0459, 0460 | Radiolva | 0320 |
| Mediator | 0320, 0349, 0350 | Nicamagic | 0277, 0342 | Philips | 0008, 0009, 0010, 0011, 0012, 0032, 0048, 0049, 0052, 0122, 0128, 0134, 0186, 0187, 0213, 0221, 0224, 0226, 0239, 0256, 0257, 0259, 0261, 0263, 0267, 0280, 0281, 0287, 0296, 0299, 0301, 0303, 0305, 0313, 0319, 0320, 0324, 0333, 0339, 0342, 0349, 0350, 0353, 0357, 0360, 0380, 0383, 0452, 0459, 0460 | RadioShack | 0019, 0021, 0031, 0050, 0179, 0320 |
| Medion | 0320, 0337, 0343 | Nikkai | 0277, 0282, 0320, 0323, 0337, 0340, 0342, 0349, 0350 | Philips | 0008, 0009, 0010, 0011, 0012, 0032, 0048, 0049, 0052, 0122, 0128, 0134, 0186, 0187, 0213, 0221, 0224, 0226, 0239, 0256, 0257, 0259, 0261, 0263, 0267, 0280, 0281, 0287, 0296, 0299, 0301, 0303, 0305, 0313, 0319, 0320, 0324, 0333, 0339, 0342, 0349, 0350, 0353, 0357, 0360, 0380, 0383, 0452, 0459, 0460 | RadioShack/Realistic | 0007, 0008, 0012, 0026, 0049, 0058 |
| Megapower | 0140 | Nobliko | 0026, 0031, 0050 | Philips | 0008, 0009, 0010, 0011, 0012, 0032, 0048, 0049, 0052, 0122, 0128, 0134, 0186, 0187, 0213, 0221, 0224, 0226, 0239, 0256, 0257, 0259, 0261, 0263, 0267, 0280, 0281, 0287, 0296, 0299, 0301, 0303, 0305, 0313, 0319, 0320, 0324, 0333, 0339, 0342, 0349, 0350, 0353, 0357, 0360, 0380, 0383, 0452, 0459, 0460 | Radiola | 0282, 0320, 0349, 0350 |
| Megatron | 0026, 0031 | Nokia | 0347 | Philips | 0008, 0009, 0010, 0011, 0012, 0032, 0048, 0049, 0052, 0122, 0128, 0134, 0186, 0187, 0213, 0221, 0224, 0226, 0239, 0256, 0257, 0259, 0261, 0263, 0267, 0280, 0281, 0287, 0296, 0299, 0301, 0303, 0305, 0313, 0319, 0320, 0324, 0333, 0339, 0342, 0349, 0350, 0353, 0357, 0360, 0380, 0383, 0452, 0459, 0460 | Radiomarelli | 0320, 0339 |
| MElectronic | 0277, 0282, 0320, 0323 | Norcent | 0201 | Philips | 0011, 0032, 0033 | Radiotone | 0161, 0320, 0323, 0350 |
| Melvox | 0321 | Nordic | 0282 | Philips | 0011, 0032, 0033 | Rank | 0344 |
| Memorex | 0019, 0026, 0031, 0053, 0054, 0137, 0215, 0323, 0343 | Nordmende | 0339, 0345, 0347, 0350 | Philips | 0011, 0032, 0033 | RCA | 0008, 0021, 0024, 0025, 0026, 0027, 0042, 0049, 0052, 0053, 0063, 0136, 0225 |
| | | Nordvision | 0349 | Philips | 0011, 0032, 0033 | Realistic | 0019, 0031, 0050, 0179 |

| | | | | | | | |
|---------------|--|----------------|--|------------------|--|-----------------|--|
| Recor | 0320 | Sencora | 0323, 0343 | Superscan | 0013, 0178 | Thorn | 0320, 0349 |
| Redstar | 0320 | Sentra | 0323 | SuperTech | 0277, 0320, 0323 | TMK | 0008, 0026, 0031 |
| Reflex | 0320 | Serino | 0277 | Supra | 0323, 0343 | TNCi | 0030 |
| Revox | 0161, 0320, 0349, 0350 | Sharp | 0000, 0001, 0002, 0003, 0007, 0008, 0012, 0026, 0060, 0088, 0089, 0091, 0138, 0165, 0170, 0178, 0198, 0229, 0262, 0278, 0279, 0291, 0308, 0312, 0336, 0344, 0354, 0370, 0449, 0450, 0451, 0464, 0474, 0476, 0481 | Supre-Macy | 0057 | Tokai | 0282, 0320, 0350 |
| Rex | 0337, 0346, 0347 | | | Supreme | 0055, 0107 | Tokyo | 0277, 0342 |
| RFT | 0161, 0168, 0339 | | | Susumu | 0340 | Tomashi | 0348 |
| Rhapsody | 0277 | | | Sutron | 0323, 0343 | Toshiba | 0018, 0019, 0040, 0041, 0046, 0073, 0100, 0103, 0108, 0109, 0111, 0121, 0132, 0166, 0208, 0210, 0214, 0217, 0260, 0268, 0282, 0283, 0293, 0304, 0306, 0307, 0329, 0344, 0355, 0454, 0491 |
| R-Line | 0320, 0349, 0350 | Sheng Chia | 0178 | SVA | 0151 | | |
| Roadstar | 0323, 0337, 0340, 0343 | Shogun | 0008 | Sydney | 0277, 0282, 0342 | | |
| Robotron | 0339 | Siarem | 0320, 0339, 0341 | Sylvania | 0008, 0009, 0010, 0011, 0013, 0026, 0048, 0050, 0051, 0128, 0227, 0253 | | |
| Rowa | 0277, 0282, 0400, 0403, 0494 | Sierra | 0320, 0350 | Symphonic | 0051, 0058, 0062, 0128, 0179, 0215 | Totevision | 0007 |
| Royal Lux | 0161 | Siesta | 0161 | Syntax | 0199 | Towada | 0282, 0347 |
| RTF | 0339 | Signature | 0054 | Syntax-Brilliant | 0199 | Trakton | 0282 |
| Runco | 0030, 0050, 0062 | Silva | 0277 | Sysline | 0349 | Trans Continens | 0282, 0320 |
| Saba | 0298, 0322, 0339, 0345, 0347 | Silver | 0344 | Sytong | 0277 | Transtec | 0277 |
| Saisho | 0282, 0323, 0337, 0342, 0343 | Singer | 0321, 0339, 0341 | Tandy | 0178, 0282, 0336, 0340, 0342, 0347 | Trident | 0282 |
| Salora | 0346, 0347 | Sinudyne | 0320, 0339, 0341, 0349 | | | Triumph | 0320 |
| Sambers | 0171, 0341 | Skantic | 0347 | Tashiko | 0277, 0282, 0342, 0344, 0346 | Uher | 0161, 0171, 0320, 0347, 0350 |
| Sampo | 0007, 0008, 0026, 0050, 0176, 0400 | Skyworth | 0402, 0492, 0493, 0495 | Tatung | 0052, 0177, 0282, 0320, 0342, 0349, 0350 | Ultravox | 0277, 0320, 0339, 0341, 0342 |
| Samsung | 0004, 0005, 0006, 0007, 0008, 0012, 0026, 0031, 0036, 0050, 0053, 0076, 0077, 0079, 0114, 0124, 0125, 0126, 0127, 0139, 0161, 0183, 0185, 0190, 0191, 0258, 0264, 0277, 0282, 0320, 0323, 0334, 0337, 0342, 0343, 0349, 0350, 0351, 0373, 0453, 0468 | Solavox | 0347 | TCM | 0337, 0343 | Unic Line | 0320 |
| Sandra | 0277, 0282, 0342 | Sonitron | 0161, 0282 | TCL | 0400, 0401, 0403, 0406, 0494 | United | 0349 |
| Sansui | 0043, 0109, 0320, 0350, 0400 | Sonoko | 0282, 0320, 0323, 0337, 0342, 0343, 0349, 0350 | Teac | 0282, 0320, 0400 | Universum | 0161, 0171, 0282, 0320, 0337, 0349, 0350, 0351 |
| Sanyo | 0008, 0019, 0068, 0070, 0071, 0099, 0161, 0168, 0223, 0237, 0277, 0282, 0288, 0295, 0323, 0342, 0344, 0369, 0469 | Sonolor | 0321, 0347 | Tec | 0282, 0323, 0342, 0343 | Univox | 0320 |
| SBR | 0320, 0349 | Sontec | 0161, 0320, 0349, 0350 | Technics | 0017, 0023, 0056 | Vector Research | 0050 |
| Sceptre | 0235, 0244 | Sony | 0038, 0044, 0045, 0047, 0055, 0090, 0104, 0105, 0107, 0110, 0123, 0184, 0220, 0248, 0249, 0251, 0252, 0254, 0326, 0343, 0344, 0371, 0374, 0457, 0475, 0486 | TechniSat | 0274, 0496, 0497, 0499 | Vestel | 0282, 0320, 0346, 0347, 0349, 0350, 0351 |
| Schaub Lorenz | 0347 | Sound & Vision | 0340, 0341 | Techwood | 0008, 0023, 0026, 0056 | Vexa | 0320, 0323, 0343, 0349 |
| Schneider | 0282, 0316, 0318, 0320, 0333, 0340, 0342, 0349, 0350, 0382 | Soundesign | 0008, 0026, 0031, 0058, 0059, 0179 | TEDELEX | 0282 | Victor | 0015, 0344, 0350 |
| Scotch | 0026, 0031 | Squareview | 0320, 0349, 0350 | Teknika | 0007, 0008, 0010, 0012, 0026, 0053, 0054, 0058, 0059, 0179 | VIDEOLOGIC | 0277 |
| Scott | 0008, 0012, 0026, 0031, 0058, 0059, 0149, 0179 | SSS | 0008, 0058, 0179 | Teleavia | 0345 | Videologicue | 0277, 0282, 0340, 0342 |
| Sears | 0008, 0010, 0019, 0021, 0026, 0027, 0031, 0049, 0051, 0059, 0111 | Standard | 0282, 0320, 0323, 0340, 0342, 0343, 0350 | Telecor | 0282, 0320 | VideoSystem | 0320, 0350 |
| SEG | 0277, 0282, 0320, 0323, 0337, 0341, 0342, 0344, 0349, 0382 | Starlite | 0058, 0179, 0320, 0323, 0349 | Telefunken | 0320, 0322, 0345, 0350 | Videotechnic | 0277, 0282 |
| SEI | 0320 | Soundwave | 0320, 0349, 0350 | Telegazi | 0320 | Vidikron | 0010 |
| SEI-Sinudyne | 0339, 0341, 0347 | Squareview | 0051 | Telemeister | 0320 | Vidtech | 0008, 0026, 0031, 0053 |
| Seleco | 0344, 0346, 0347 | SSS | 0008, 0058, 0179 | Telesonic | 0320 | Viewsonic | 0176, 0203, 0232, 0364 |
| | | Standard | 0282, 0320, 0323, 0340, 0342, 0343, 0350 | Telestar | 0320 | Viking | 0057 |
| | | Starlite | 0058, 0179, 0320, 0323, 0349 | Teletech | 0320, 0323, 0343, 0349 | Viore | 0148 |
| | | Stenway | 0348 | Teleton | 0282, 0342 | Visiola | 0277, 0342 |
| | | Stern | 0346, 0347 | Televideon | 0277 | Vision | 0282, 0320, 0350 |
| | | Strato | 0320, 0323 | Televisto | 0321 | Vizio | 0008, 0177, 0218, 0242, 0500, 0501, 0502, 0503, 0506 |
| | | Stylandia | 0282 | Tensai | 0282, 0320, 0323, 0340, 0343, 0350 | Vortec | 0320, 0349, 0350 |
| | | Sunkai | 0343 | Tesmet | 0350 | Voxson | 0171, 0320, 0339, 0346, 0347, 0350 |
| | | Sunstar | 0320, 0323 | Tevion | 0337, 0343 | Waltham | 0282, 0320, 0342 |
| | | Sunwood | 0320, 0323, 0343, 0350 | Textet | 0277, 0282, 0323, 0342 | | |
| | | Superla | 0277, 0282, 0342 | Thomson | 0162, 0188, 0189, 0285, 0320, 0322, 0342, 0345, 0350 | | |

| | | | | | | | |
|--------------------|--|--------------------|--|------------------|--|------------------------|--|
| Wards | 0008, 0009, 0010, 0026, 0031, 0048, 0049, 0050, 0053, 0054, 0059 | Baird | 1009, 1025, 1026, 1027 | Dynatech | 1069 | Hinari | 1008, 1009, 1024, 1029 |
| Watson | 0320, 0349, 0350 | Bang & Olufsen | 1017 | Echostar | 1018 | Hisawa | 1024 |
| Watt Radio | 0277, 0341, 0342 | Basic Line | 1008, 1009, 1024, 1025, 1029, 1030 | Elbe | 1009 | Hitachi | 1011, 1026, 1027, 1028, 1046, 1062 |
| Waycon | 0111 | Baur | 1028 | Elcatech | 1008 | HNS | 1110 |
| Wega | 0320, 0339, 0344 | Beaumarck | 1070 | Electrohome | 1071 | Howard Computers | |
| Wegavox | 0323 | Bell & Howell | 1065 | Electrohome | 1071 | | 1016 |
| Weltblick | 0282, 0320, 0349, 0350 | Bestar | 1009, 1025, 1030 | Elsay | 1008 | HP | 1016 |
| Westinghouse | 0107, 0216, 0220 | Black Panther Line | | Elta | 1008, 1009, 1029 | HTS | 1018 |
| White Westinghouse | | | 1009, 1025 | Emerson | 1008, 1020, 1068, 1069, 1071 | Hughes | 1111, 1113, 1122 |
| | 0037, 0090, 0277, 0320, 0341, 0342, 0349 | Blaupunkt | 1028 | ESC | 1009, 1025 | Hughes Network Systems | |
| Wincom | 0101, 0106 | Bondstec | 1008, 1030 | Etzuko | 1008, 1029 | | 1110, 1116 |
| Xrypton | 0320 | Broksonic | 1100 | Expressvu | 1018 | Humax | 1012, 1110, 1113 |
| Yamaha | 0008, 0026, 0050, 0053, 0080, 0081, 0082, 0083, 0086, 0087 | Bush | 1008, 1009, 1024, 1025, 1029, 1049, 1051, 1063, 1217 | Ferguson | 1027 | Hush | 1016 |
| Yamishi | 0282, 0320 | Calix | 1071 | Fidelity | 1008, 1026 | Hypson | 1008, 1009, 1024, 1029 |
| Yokan | 0320 | Candle | 1070, 1071 | Finlandia | 1028 | iBUYPOWER | 1016 |
| Yoko | 0161, 0277, 0282, 0320, 0323, 0337, 0340, 0342, 0343, 0349, 0350 | Canon | 1068 | Finlux | 1026, 1027, 1028 | Impego | 1030 |
| Yorx | 0340 | Cathay | 1009 | Firstline | 1008, 1024, 1029, 1031 | Imperial | 1026 |
| Zanussi | 0282, 0346 | Catron | 1030 | Fisher | 1065 | Inno Hit | 1008, 1009, 1025, 1028, 1029, 1030 |
| Zenith | 0008, 0028, 0029, 0030, 0031, 0054, 0061, 0062 | CGE | 1026, 1027 | Flint | 1024 | | |
| | | Cimline | 1008, 1024, 1029 | Formenti/Phoenix | 1028 | Innovation | 1024 |
| | | CineVision | 1104 | Frontech | 1030 | Instant Replay | 1068 |
| | | Citizen | 1070, 1071 | Fuji | 1068 | Interbuy | 1008, 1031 |
| | | Clatronic | 1008, 1030 | Fujitsu | 1026 | Interfunk | 1028 |
| | | Colorlyme | 1064 | Funai | 1026, 1069 | Intervision | 1009, 1026 |
| | | Condor | 1009, 1025, 1030 | Galaxy | 1026 | Irradio | 1008, 1029, 1031 |
| | | Craig | 1070, 1071 | Garrard | 1069 | ITT | 1027 |
| | | Crown | 1008, 1009, 1025, 1029, 1030 | Gateway | 1016 | ITV | 1009, 1025, 1031 |
| | | Curtis Mathes | 1064, 1068, 1070 | GBC | 1029, 1030 | JC Penney | 1064, 1065, 1068, 1070, 1071 |
| | | Cybernex | 1070 | GE | 1068, 1070 | JCL | 1068 |
| | | CyberPower | 1016 | GEC | 1028 | JVC | 1007, 1018, 1027, 1039, 1064, 1065, 1066, 1067, 1078, 1089, 1092, 1093, 1094, 1095, 1113, 1208, 1209, 1212, 1213, 1215, 1218 |
| | | Daewoo | 1009, 1025, 1030, 1038, 1069, 1223 | Geloso | 1029 | | |
| | | | | General | 1030 | Kaisui | 1008, 1029 |
| | | Dansai | 1008, 1009, 1029 | General Technic | 1024 | Karcher | 1028 |
| | | Dantax | 1024 | GOI | 1018 | Kendo | 1008, 1024, 1025, 1030 |
| | | Daytron | 1009, 1025 | GoldHand | 1008, 1029 | Kenwood | 1027, 1064, 1065 |
| | | DBX | 1064 | Goldstar | 1026, 1031, 1064, 1071 | Kodak | 1068, 1071 |
| | | De Graaf | 1028 | Goodmans | 1008, 1009, 1025, 1026, 1029, 1030, 1031 | Korpel | 1008, 1029 |
| | | Decca | 1026, 1027, 1028 | | | Kyoto | 1008 |
| | | Dell | 1016 | Gradiente | 1069 | Lenco | 1025 |
| | | Denko | 1008 | Graetz | 1027 | Leyco | 1008, 1029 |
| | | DiamondVision | 1096 | Granada | 1028 | LG | 1010, 1026, 1031, 1047, 1054, 1056, 1071, 1103, 1221 |
| | | DigiFusion | 1014 | Grandin | 1008, 1009, 1025, 1026, 1029, 1030, 1031 | | |
| | | DIRECTV | 1019, 1105, 1110, 1111, 1113, 1116, 1122 | | | Lifetec | 1024 |
| | | Dish Network | 1018 | Grundig | 1028, 1029 | Linksys | 1016 |
| | | Dishpro | 1018 | Hanseatic | 1009, 1028, 1031 | Lloyd's | 1069 |
| | | Dual | 1009, 1027, 1028 | Harley Davidson | 1069 | Loewe Opta | 1028, 1031 |
| | | Dumont | 1026, 1028 | Harman/Kardon | 1064 | Logik | 1008, 1029 |
| | | Durabrand | 1114 | Harwood | 1008 | | |
| | | | | HCM | 1008, 1029 | | |
| | | | | Headquarter | 1065 | | |
| | | | | Hewlett Packard | 1016 | | |

VCR

| | | | | | | | |
|----------------|------------------------------------|--|--|--|--|--|--|
| ABS | 1016 | | | | | | |
| Adventura | 1069 | | | | | | |
| Adyson | 1008 | | | | | | |
| Aiwa | 1024, 1026, 1027, 1069 | | | | | | |
| Akai | 1021, 1027 | | | | | | |
| Akiba | 1008, 1029 | | | | | | |
| Akura | 1008, 1027, 1029 | | | | | | |
| Alba | 1008, 1009, 1024, 1025, 1029, 1030 | | | | | | |
| Alienware | 1016 | | | | | | |
| Ambassador | 1030 | | | | | | |
| American High | 1068 | | | | | | |
| Amstrad | 1008, 1009, 1026 | | | | | | |
| Anitech | 1008, 1029 | | | | | | |
| Apex | 1088 | | | | | | |
| ASA | 1028, 1031 | | | | | | |
| Asha | 1070 | | | | | | |
| Asuka | 1008, 1026, 1028, 1029, 1031 | | | | | | |
| Audio Dynamics | 1064 | | | | | | |
| Audiosonic | 1009 | | | | | | |
| Audiovox | 1071 | | | | | | |

| | | | | | | | |
|-----------------|--|----------------------|--|---------------|--|-------------------|--|
| Lumatron | 1009, 1025 | Panasonic | 1000, 1022, 1044, 1055, 1068, 1072, 1085, 1090, 1091, 1120, 1121, 1214 | Sanky | 1114 | TCM | 1015, 1024, 1042 |
| Luxor | 1008 | | | Sansui | 1023, 1027, 1106, 1115 | Teac | 1009, 1069 |
| LXI | 1071 | | | Sanyo | 1032, 1065, 1070 | Tec | 1008, 1009, 1030 |
| M Electronic | 1026 | Pathe Marconi | 1027 | Saville | 1009 | Technics | 1068 |
| Magnavox | 1020, 1068, 1114, 1126 | Perdio | 1026 | SBR | 1028 | Teknika | 1068, 1069, 1071 |
| Magnin | 1071 | Philco | 1008, 1068 | Schaub Lorenz | 1026, 1027 | Teleavia | 1027 |
| Manesth | 1008, 1029 | Philips | 1006, 1013, 1028, 1035, 1040, 1045, 1046, 1050, 1058, 1059, 1061, 1068, 1076, 1101, 1110, 1113, 1116, 1117, 1122, 1126, 1210, 1211 | Schneider | 1008, 1009, 1024, 1025, 1026, 1028, 1029, 1030, 1031 | Telefunken | 1027 |
| Marantz | 1028, 1064, 1065, 1068 | | | Sears | 1065, 1068, 1071 | Teletech | 1008, 1009 |
| Mark | 1009 | | | SEG | 1008, 1009, 1029 | Tenosal | 1008, 1029 |
| Marta | 1071 | | | SEI-Sinudyne | 1028 | Tensai | 1008, 1026, 1029, 1031 |
| Matsui | 1024, 1031 | | | Seleco | 1027 | Tevion | 1024 |
| Matsushita | 1068 | Philips Magnavox | 1076 | Sentra | 1008, 1030 | Thomson | 1005, 1027 |
| Media Center PC | 1016 | Phonola | 1028 | Sentron | 1008, 1029 | Thorn | 1027 |
| Mediator | 1028 | Pilot | 1071 | Sharp | 1003, 1033, 1077, 1107, 1127, 1219 | Tivo | 1108, 1110, 1111, 1113, 1117, 1118, 1119, 1122 |
| Medion | 1024 | Pioneer | 1028, 1036 | | | TMK | 1070 |
| MEI | 1068 | Polaroid | 1088, 1099 | Shintom | 1008, 1029 | Tokai | 1008, 1029, 1031 |
| Memorex | 1023, 1026, 1031, 1065, 1068, 1069, 1070, 1071, 1098, 1114 | Portland | 1009, 1025, 1030 | Shivaki | 1031 | Tonsai | 1029 |
| | | Prinz | 1026 | Shogun | 1070 | Toshiba | 1004, 1016, 1027, 1028, 1037, 1049, 1052, 1086, 1087, 1097, 1109, 1112, 1194 |
| Memphis | 1008, 1029 | Profex | 1029 | Siemens | 1031 | Totevision | 1070, 1071 |
| MGN Technology | 1070 | Proline | 1026 | Silva | 1031 | Touch | 1016 |
| Micromaxx | 1024 | Proscan | 1019 | Silver | 1009 | Towada | 1008, 1029 |
| Microsoft | 1016 | Prosonic | 1009, 1024 | Singer | 1068 | Towika | 1008, 1029 |
| Microstar | 1024 | Pulsar | 1114 | Sinudyne | 1028 | TVA | 1030 |
| Migros | 1026 | Pye | 1028, 1102 | Solavox | 1030 | Uher | 1031 |
| Mind | 1016 | Quarter | 1065 | Sonic Blue | 1022, 1123 | UltimateTV | 1019 |
| Mitsubishi | 1026, 1028, 1079 | Quartz | 1065 | Sonneclair | 1008 | Ultravox | 1009 |
| Motorola | 1068 | Quasar | 1068 | Sonoko | 1009, 1025 | Unitech | 1070 |
| MTC | 1070 | Quelle | 1026, 1028 | Sontec | 1031 | United Quick Star | 1009, 1025 |
| Multitech | 1008, 1026, 1028, 1029, 1030, 1069, 1070 | Radialva | 1008 | Sony | 1001, 1016, 1048, 1053, 1073, 1074, 1080, 1081, 1082, 1083, 1108, 1118, 1216 | Universum | 1026, 1028, 1031 |
| | | RadioShack | 1071 | Stack | 1016 | Vector Research | 1064 |
| Murphy | 1026 | RadioShack/Realistic | 1065, 1068, 1069, 1070, 1071 | Stack 9 | 1016 | Video Concepts | 1064 |
| NEC | 1027, 1064, 1065 | Radiola | 1028 | Standard | 1009, 1025 | Videon | 1024 |
| Neckermann | 1027, 1028 | Radix | 1071 | Stern | 1009 | Videosonic | 1070 |
| NEI | 1028 | Randex | 1071 | STS | 1068 | Viewsonic | 1016 |
| Nesco | 1008, 1029 | RCA | 1019, 1068, 1070, 1075, 1110, 1113, 1122, 1125 | Sunkai | 1024 | Voodoo | 1016 |
| Nikkai | 1008, 1009, 1030 | Realistic | 1065, 1068, 1069, 1070, 1071 | Sunstar | 1026 | Wards | 1068, 1069, 1070, 1071 |
| Nikko | 1071 | ReplayTV | 1022, 1123 | Suntronic | 1026 | Weltblick | 1031 |
| Niveus Media | 1016 | Rex | 1027 | Sunwood | 1008, 1029 | XR-1000 | 1068, 1069 |
| Noblex | 1070 | RFT | 1008, 1028, 1030 | Superscan | 1020 | Yamaha | 1064, 1065 |
| Nokia | 1009, 1027 | Ricavision | 1016 | Sylvania | 1020, 1068, 1069, 1102, 1126 | Yamishi | 1008, 1029 |
| Nordmende | 1027 | Roadstar | 1008, 1009, 1025, 1029, 1031 | Symphonic | 1008, 1069, 1126 | Yokan | 1008, 1029 |
| Northgate | 1016 | Royal | 1008 | Systemax | 1016 | Yoko | 1008, 1029, 1030, 1031 |
| Oceanic | 1026, 1027 | Runco | 1114 | Tagar Systems | 1016 | Zenith | 1114 |
| Okano | 1008, 1009, 1024 | Saba | 1027 | Taisho | 1024 | ZT Group | 1016 |
| Olympus | 1068 | Saisho | 1024, 1029 | Tandberg | 1009 | | |
| Optimus | 1071 | Samsung | 1002, 1034, 1041, 1043, 1057, 1060, 1070, 1084, 1110, 1116, 1122, 1124, 1220, 1222 | Tandy | 1065 | | |
| Orion | 1023, 1024, 1051, 1115, 1217 | | | Tashiko | 1026, 1071 | | |
| Orson | 1026 | Samurai | 1008, 1030 | Tatung | 1026, 1027, 1028 | | |
| Osaki | 1008, 1026, 1029, 1031 | | | | | | |
| Otto Versand | 1028 | | | | | | |
| Palladium | 1008, 1027, 1029, 1031 | | | | | | |

DVD

| | | | | | | | |
|-----------------------|-------------------------------|----------------------|-------------------------------|----------------------|-------------------------------|--------------|-------------------------------|
| 4Kus | 2051 | Cinetec | 2363 | Funai | 2137 | Kiss | 2380 |
| Accurian | 2142 | CineVision | 2133, 2237 | Gateway | 2051 | KLH | 2131, 2149 |
| Advent | 2155, 2251 | Clatronic | 2358, 2367 | GE | 2029, 2131, 2156 | Koda | 2358 |
| AEG | 2362 | Coby | 2031, 2046, 2360 | Gericom | 2351 | Koss | 2013, 2148, 2158 |
| Airis | 2364 | Conia | 2383 | GFM | 2226 | KXD | 2359 |
| Aiwa | 2322 | Continental Edison | | Giec | 2382 | Landel | 2143 |
| Akai | 2145, 2177, 2179, 2248 | | 2363 | Global Solutions | 2355 | Lasonic | 2132 |
| Akura | 2356 | Crown | 2362 | Global Sphere | 2355 | Lawson | 2355 |
| Alba | 2064, 2165, 2186, 2337, 2346 | C-Tech | 2355 | Go Video | 2133, 2213 | Lecson | 2381 |
| Alco | 2149 | Curtis Mathes | 2139 | Goodmans | 2165, 2280, 2291, 2358, 2371, | Lenco | 2358, 2362, 2367 |
| Alize | 2361 | CVG | 2377 | | 2376, 2382 | Lenoxx | 2136, 2153 |
| Allegro | 2133 | CyberHome | 2022, 2098, 2138, 2187, 2336 | GPX | 2227 | LG | 2002, 2033, 2038, 2057, 2129, |
| Amitech | 2362 | Cytron | 2244 | Gradiente | 2151 | | 2133, 2189, 2191, 2223, 2238, |
| Amphion MediaWorks | | Daenyx | 2363 | Graetz | 2380 | | 2270, 2288, 2335, 2373, 2375 |
| | 2195 | Daewoo | 2001, 2133, 2276, 2298, 2330, | Greenhill | 2131 | Life | 2182 |
| AMW | 2195, 2363 | | 2362, 2363, 2377 | Grundig | 2349 | Lifetec | 2182 |
| Apex | 2030, 2124, 2125, 2126, 2127, | Daewoo International | | Grunkel | 2362, 2366 | Limit | 2355 |
| | 2130, 2131 | | 2363 | GVG | 2377 | Liquid Video | 2158 |
| Apple | 2241 | Dalton | 2357 | H&B | 2358 | Liteon | 2043, 2051, 2142 |
| Arrgo | 2138 | Dansai | 2362, 2381 | H_her | 2364 | Loewe | 2320 |
| Asono | 2364 | Daytek | 2184, 2195, 2363 | Haaz | 2354, 2355 | LogicLab | 2355 |
| Aspire | 2152, 2222 | Dayton | 2363 | Haier | 2254 | Magnavox | 2025, 2050, 2137, 2150, 2159, |
| Astar | 2240 | DEC | 2358 | Harman/Kardon | 2047, 2135 | | 2224, 2230, 2358 |
| ATACOM | 2364 | Decca | 2362 | HiMAX | 2359 | Magnex | 2367 |
| Audiovox | 2061, 2149 | Denon | 2059, 2151, 2193, 2332 | Hitachi | 2062, 2090, 2115, 2274, 2316, | Majestic | 2360 |
| Avioous | 2367 | Denver | 2356, 2358, 2360, 2370 | | 2359, 2380 | Marantz | 2328 |
| Awa | 2363 | Denzel | 2380 | Hiteker | 2130 | Marquant | 2362 |
| Axion | 2249 | Desay | 2205 | Home Tech Industries | | Matsui | 2148, 2378 |
| Bang & Olufsen | 2128 | Diamond | 2354, 2355 | | 2364 | McIntosh | 2199 |
| Baze | 2367 | DiamondVision | 2225, 2232 | Hyundai | 2366 | Mecotek | 2362 |
| BBK | 2364 | Disney | 2010, 2028 | Ilo | 2245 | Medion | 2182 |
| Bellagio | 2363 | DK Digital | 2339 | Initial | 2131, 2245 | Memorex | 2028, 2145, 2234 |
| Best Buy | 2359 | Dmtech | 2176 | Innovation | 2182 | MiCO | 2354, 2382 |
| Blaupunkt | 2131 | Dual | 2380 | Insignia | 2002, 2137, 2253 | Micromaxx | 2182 |
| Blue Parade | 2157 | DUNE | 2473 | Integra | 2157 | Microsoft | 2156 |
| Boghe | 2382 | Durabrand | 2136 | Irradio | 2053 | Microstar | 2182 |
| Brainwave | 2362 | DVX | 2355 | iSymphony | 2246 | Minoka | 2362 |
| Brandt | 2148, 2188 | Easy Home | 2359 | JBL | 2135 | Minowa | 2367 |
| Broksonic | 2145, 2146 | Eclipse | 2354 | JVC | 2020, 2096, 2097, 2099, 2100, | Mintek | 2131, 2245 |
| Bush | 2064, 2110, 2170, 2268, 2290, | E-Dem | 2364 | | 2101, 2102, 2103, 2106, 2107, | Mitsubishi | 2003 |
| | 2346, 2358, 2367, 2383 | Electrohome | 2362 | | 2160, 2257, 2260, 2262, 2263, | Mizuda | 2358, 2359 |
| California Audio Labs | | Elin | 2362 | | 2321, 2324, 2326, 2327, 2343, | Monyka | 2380 |
| | 2151 | Elta | 2341, 2361, 2362 | | 2464, 2465, 2468, 2469, 2471 | Mustek | 2186 |
| Cambridge Audio | 2354 | Emerson | 2129, 2137, 2150 | Jwin | 2198 | Mx Onda | 2354 |
| CAT | 2352, 2353 | Enterprise | 2129 | Kansai | 2360 | Mystral | 2366 |
| CAVS | 2192 | Enzer | 2380 | Kawasaki | 2149 | Naiko | 2362 |
| Centrum | 2353 | Epson | 2247 | Kennex | 2362 | Nesa | 2131 |
| CGV | 2354, 2362 | ESA | 2137 | Kenwood | 2041, 2151, 2348 | Neufunk | 2380 |
| Changhong | 2140 | Finlux | 2354, 2362, 2367 | KeyPlug | 2362 | Nevir | 2362 |
| | | Fintec | 2377 | Kiuro | 2362 | Next Base | 2143 |
| | | Fisher | 2134 | Kingavon | 2358 | Nexxtech | 2243 |

| | | | | | | | |
|------------|---|-----------------|--|-----------------|--|--------------|--|
| NU-TEC | 2383 | RedStar | 2356, 2360, 2362 | Standard | 2355 | XMS | 2362 |
| Onkyo | 2159, 2368 | Regent | 2153 | Star Cluster | 2355 | Xoro | 2382 |
| Oopla | 2051 | Reoc | 2355 | Starmedia | 2358, 2364 | Yamada | 2051, 2361, 2363 |
| Oppo | 2196, 2255 | Rimax | 2361 | Sungale | 2204 | Yamaha | 2056, 2064, 2065, 2080, 2081, 2082, 2083, 2089, 2118, 2151, 2323 |
| Optim | 2381 | Rio | 2133 | Sunkai | 2362 | Yamakawa | 2363, 2380 |
| Optimus | 2180 | Roadstar | 2331, 2358 | Superscan | 2150 | Yukai | 2186 |
| Orava | 2358 | Ronin | 2363 | Supervision | 2355 | Zenith | 2002, 2129, 2133, 2159, 2223 |
| Orbit | 2363 | Rotel | 2203 | Sylvania | 2012, 2137, 2150, 2178, 2230, 2239 | | |
| Orion | 2073, 2110 | Rowa | 2154, 2383 | Symphonic | 2108, 2230 | | |
| Oritron | 2148, 2158 | Rownsnic | 2353 | Synn | 2355 | | |
| P&B | 2358 | Saba | 2148, 2188 | T.D.E. Systems | 2366 | | |
| Pacific | 2355 | Sabaki | 2355 | Tatung | 2001, 2362 | | |
| Panasonic | 2011, 2024, 2034, 2042, 2058, 2062, 2066, 2067, 2093, 2116, 2117, 2118, 2119, 2120, 2121, 2122, 2123, 2151, 2159, 2164, 2166, 2167, 2172, 2173, 2175, 2209, 2214, 2275, 2277, 2278, 2281, 2282, 2283, 2301, 2374, 2470 | Saivod | 2362 | TCM | 2182, 2297 | | |
| Parasound | 2197 | Sampo | 2141 | Teac | 2149, 2333, 2355, 2383 | | |
| peeKTON | 2364 | Samsung | 2000, 2045, 2077, 2112, 2113, 2114, 2115, 2151, 2200, 2216, 2219, 2228, 2264, 2265, 2271, 2279, 2294, 2303, 2329, 2365 | Tec | 2356 | | |
| Philips | 2008, 2012, 2025, 2044, 2050, 2051, 2053, 2060, 2072, 2108, 2111, 2147, 2159, 2163, 2169, 2174, 2181, 2185, 2230, 2261, 2266, 2267, 2286, 2287, 2289, 2295, 2300, 2302, 2317, 2328, 2338, 2342, 2350, 2467 | Sansui | 2073, 2145, 2354, 2355, 2362 | Technics | 2151 | | |
| Phonotrend | 2367 | Sanyo | 2134, 2145, 2217, 2292 | Technika | 2362, 2367 | LG | 2033, 2456, 2457 |
| Pioneer | 2016, 2017, 2018, 2019, 2035, 2092, 2094, 2095, 2109, 2157, 2180, 2190, 2212, 2269, 2272, 2299, 2304, 2305, 2306, 2307, 2308, 2309, 2310, 2311, 2344, 2345, 2347, 2379 | ScanMagic | 2186 | Telefunken | 2353 | Marantz (US) | 2454, 2455 |
| Pointer | 2362 | Schaub Lorenz | 2362 | Tensai | 2362 | Mitsubishi | 2450, 2451 |
| Polaroid | 2125, 2215, 2235 | Schneider | 2176 | Tevion | 2182, 2355, 2357 | Onkyo | 2504 |
| Portland | 2362 | Scientific Labs | 2355 | Theta Digital | 2157 | Panasonic | 2011, 2209, 2214, 2476, 2477, 2479 |
| Powerpoint | 2363 | Scott | 2161, 2357 | Thomson | 2183, 2188, 2334, 2372 | Philips | 2510 |
| Powerpoint | 2363 | Seeltech | 2364 | Tokai | 2356, 2380 | Pioneer | 2212, 2506 |
| Prima | 2252 | SEG | 2161, 2355, 2363, 2380 | Top Sucess | 2364 | Samsung | 2045, 2113, 2498 |
| Proceed | 2130 | Sharp | 2006, 2040, 2088, 2091, 2182, 2194, 2220, 2221, 2231, 2236, 2293, 2340 | Toshiba | 2032, 2036, 2037, 2039, 2048, 2049, 2054, 2055, 2072, 2073, 2076, 2078, 2079, 2086, 2145, 2159, 2218, 2233, 2256, 2259, 2296, 2369, 2472 | Sharp | 2194, 2220, 2221, 2497, 2502, 2503 |
| Proscan | 2156 | Shinsonic | 2245 | TRANScontinents | 2363, 2367 | Sony | 2075, 2453, 2458, 2459, 2507 |
| Prosonic | 2360, 2377 | Sigmatek | 2359, 2364 | Transonic | 2367 | Toshiba | 2462 |
| Protron | 2202 | Silva | 2356 | Trio | 2362 | Yamaha | 2064, 2448, 2449, 2474, 2505 |
| Provision | 2358 | Singer | 2354, 2355 | Trutech | 2242 | | |
| Pye | 2144 | Skymaster | 2325, 2355 | TruVision | 2359 | | |
| Qwestar | 2148 | Skyworth | 2356 | TSM | 2364 | | |
| Raite | 2380 | Slim Art | 2362 | Umax | 2361 | | |
| RCA | 2021, 2029, 2104, 2105, 2131, 2149, 2156, 2157, 2229 | SM Electronic | 2355 | United | 2367 | | |
| | | Sonic Blue | 2133 | Urban Concepts | 2159 | | |
| | | Sontech | 2366 | US Logic | 2245 | | |
| | | Sony | 2004, 2005, 2007, 2009, 2014, 2015, 2023, 2026, 2027, 2052, 2068, 2069, 2070, 2071, 2074, 2075, 2084, 2085, 2087, 2168, 2171, 2208, 2210, 2211, 2258, 2273, 2284, 2285, 2312, 2313, 2314, 2315, 2318, 2319, 2466 | Venturer | 2149 | | |
| | | Soundmaster | 2355 | Viewmaster | 2364 | | |
| | | Soundmax | 2355 | Vocopro | 2206 | | |
| | | Spectra | 2363 | VocoStar | 2207 | | |
| | | Spectroniq | 2201 | Waitec | 2364 | | |
| | | | | Welltech | 2382 | | |
| | | | | Westinghouse | 2063, 2250 | | |
| | | | | Wharfedale | 2354, 2355 | | |
| | | | | Woxter | 2361, 2364 | | |
| | | | | Xbox | 2156, 2183 | | |
| | | | | Xlogic | 2355, 2362 | | |

Blu-ray Disc

| | |
|--------------|---|
| Denon | 2452, 2500, 2501 |
| Hitachi | 2460, 2461, 2463 |
| JVC | 2472, 2473, 2475, 2478, 2496, 2499, 2511 |
| LG | 2033, 2456, 2457 |
| Marantz (US) | 2454, 2455 |
| Mitsubishi | 2450, 2451 |
| Onkyo | 2504 |
| Panasonic | 2011, 2209, 2214, 2476, 2477, 2479 |
| Philips | 2510 |
| Pioneer | 2212, 2506 |
| Samsung | 2045, 2113, 2498 |
| Sharp | 2194, 2220, 2221, 2497, 2502, 2503 |
| Sony | 2075, 2453, 2458, 2459, 2507 |
| Toshiba | 2462 |
| Yamaha | 2064, 2448, 2449, 2474, 2505 |

DVR

| | |
|-----------|---|
| Bush | 2110 |
| Hitachi | 2090 |
| Panasonic | 2066, 2067, 2093, 2116, 2117, 2119, 2120, 2122, 2123 |
| Philips | 2108, 2111 |
| Pioneer | 2016, 2017, 2018, 2019, 2092, 2094, 2095, 2109 |
| RCA | 2105 |
| Samsung | 2113, 2219 |
| Sharp | 2088, 2091 |
| Sony | 2084, 2085, 2087 |
| Toshiba | 2086, 2218 |
| Victor | 2475 |
| Yamaha | 2089, 2118 |

DVD Recorder

| | |
|-----------|--|
| Aspire | 2222 |
| Astar | 2240 |
| Broksonic | 2146 |
| Go Video | 2213 |
| Hitachi | 2062 |
| Insignia | 2002 |
| Irradio | 2053 |
| JVC | 2100, 2101, 2106, 2107 |
| LG | 2033, 2057, 2223, 2238 |
| Liteon | 2043 |
| Panasonic | 2011, 2034, 2058, 2062, 2116, 2117, 2119, 2120, 2121, 2123 |
| Philips | 2008, 2044, 2050, 2051, 2147 |
| Pioneer | 2017, 2035 |
| Pye | 2144 |
| Samsung | 2000, 2112, 2216 |
| Sansui | 2073 |
| Sanyo | 2217 |
| Sony | 2004, 2005, 2007, 2052, 2068, 2069, 2074, 2208, 2210, 2211, 2239 |
| Sylvania | |
| Toshiba | 2032, 2036, 2037, 2039, 2049, 2054, 2055, 2076 |
| Yamaha | 2056 |

Cable

| | |
|-------------------|--|
| ABC | 3002, 3003, 3017, 3066, 3067, 3086, 3093, 3119, 3122 |
| ADB | 3020 |
| Adelphia | 3081 |
| Alcatel | 3016 |
| Americast | 3124 |
| Amstrad | 3022, 3098 |
| Antronix | 3065, 3070 |
| Archer | 3070 |
| Arcon | 3098 |
| AT&T | 3095 |
| Axis | 3098 |
| Bell South | 3124 |
| Cable Vision | 3092 |
| Cabletenna | 3065 |
| Cabletime | 3104 |
| Cableview | 3087 |
| Clearmaster | 3127 |
| ClearMax | 3127 |
| Clyde Cablevision | 3105 |
| Colour Voice | 3068 |

| | |
|--------------------|--|
| Comcast | 3084, 3088, 3117 |
| Comcrypt | 3107 |
| Comtronics | 3069 |
| Contec | 3074 |
| Coolmax | 3127 |
| COX | 3084 |
| Cryptovision | 3110 |
| Director | 3084 |
| Eastern | 3075 |
| Everquest | 3123 |
| Fidelity | 3098 |
| Filmnet | 3107 |
| Filmnet Cablecrypt | 3111 |
| Filmnet Comercrypt | 3111 |
| Finlux | 3097 |
| FIOS | 3004 |
| Focus | 3126 |
| Foxtel | 3022 |
| France Telecom | 3100, 3101 |
| Freebox | 3023 |
| GC Electronics | 3070 |
| GE | 3066, 3093 |
| GEC | 3105 |
| Gemini | 3072, 3123 |
| General Instrument | 3017, 3025, 3066, 3084, 3090, 3096, 3117 |
| Goldstar | 3120 |
| Gooding | 3099 |
| Grundig | 3098, 3099 |
| Hamlin | 3073, 3078 |
| Hirschmann | 3097 |
| Hitachi | 3066 |
| HomeChoice | 3106 |
| Humax | 3021, 3080, 3083 |
| ITT Nokia | 3097 |
| Jasco | 3123 |
| Jerrold | 3017, 3018, 3025, 3066, 3072, 3084, 3090, 3096, 3119, 3123 |
| JVC | 3099 |
| Kabel Deutschland | 3024, 3027, 3121 |
| Macab | 3101 |
| Magnavox | 3079 |
| Maspro | 3099 |
| Matsui | 3099 |
| MegaCable | 3117 |
| Memorex | 3076, 3122 |
| Minerva | 3099 |

| | |
|--------------------------|--|
| Mnet | 3107 |
| Motorola | 3025, 3026, 3084, 3088, 3090, 3095, 3117 |
| Movie Time | 3077, 3109 |
| Mr Zapp | 3101 |
| Multichoice | 3107 |
| Multitech | 3127 |
| NEC | 3064 |
| NET Brazil | 3085 |
| Nokia | 3097 |
| Noos | 3101 |
| NSC | 3077 |
| Oak | 3074 |
| Pace | 3006, 3089, 3121 |
| Palladium | 3099 |
| Panasonic | 3112, 3118, 3122 |
| Paragon | 3122 |
| Philips | 3068, 3071, 3079, 3099, 3100, 3101, 3103 |
| Pioneer | 3001, 3006, 3094, 3098, 3114, 3116, 3120 |
| Popular Mechanics | 3126 |
| Proscan | 3066, 3093 |
| Pulsar | 3122 |
| PVP Stereo Visual Matrix | 3018 |
| Quasar | 3122 |
| RadioShack | 3123, 3127 |
| RCA | 3030, 3031, 3087, 3118 |
| Realistic | 3070 |
| Recoton | 3126 |
| Regal | 3078 |
| Regency | 3075 |
| Rembrandt | 3066 |
| Runco | 3122 |
| Sagem | 3101 |
| Samsung | 3069, 3089, 3114, 3120 |
| SAT | 3098 |
| Scientific Atlanta | 3000, 3001, 3002, 3003, 3006, 3028, 3029, 3081, 3086, 3089, 3094, 3095, 3108 |
| Signal | 3072, 3123 |
| Signature | 3066 |
| Sony | 3092, 3125 |
| Sprucer | 3118 |
| Standard Component | 3115 |
| Starcom | 3017, 3072, 3119, 3123 |
| Stargate | 3072, 3123 |
| Starquest | 3072, 3123 |

| | |
|--------------|------------------|
| Supercable | 3090 |
| Supermax | 3127 |
| Tele+1 | 3107, 3111 |
| TELENET | 3007 |
| Telepiu | 3107 |
| Thomson | 3082, 3091 |
| TIME WARNER | 3084 |
| Tocom | 3067 |
| Torx | 3017 |
| Toshiba | 3122 |
| Tristar | 3127 |
| Tudi | 3102 |
| Tusa | 3072, 3123 |
| TV86 | 3077 |
| Unika | 3065, 3070 |
| United Cable | 3018, 3119 |
| Universal | 3065, 3070 |
| Universum | 3097, 3099 |
| V2 | 3127 |
| Videoway | 3019 |
| View Star | 3074, 3077, 3079 |
| Viewmaster | 3127 |
| Vision | 3127 |
| Visiopass | 3097, 3100, 3101 |
| Vortex View | 3127 |
| Wittenberg | 3098 |
| Zenith | 3113, 3122, 3124 |
| Zentek | 3126 |

Satellite

| | |
|---------------|------------------------------------|
| AB Sat | 4216, 4217 |
| AccessHD | 4104 |
| ADB | 4220 |
| AGS | 4216 |
| Akai | 4053, 4055 |
| Alba | 4001, 4004, 4006, 4007, 4062, 4217 |
| Aldes | 4005, 4007, 4010 |
| Allsat | 4048, 4053, 4055 |
| Allsonic | 4005, 4008, 4024 |
| Alltech | 4217 |
| Alpha | 4053 |
| Alpha Digital | 4104 |
| Alphastar | 4077 |
| Amitronica | 4217 |
| Amstrad | 4011, 4035, 4217, 4218 |
| Anglo | 4217 |
| Ankaro | 4005, 4008, 4024, 4217 |
| Antron | 4001, 4004 |

| | | | | | | | |
|-------------------|--|----------------|--|------------------------|--|-------------------|--|
| Apollo | 4001 | Daewoo | 4057, 4217 | Finlandia | 4006 | Intertronic | 4011 |
| Armstrong | 4011, 4053 | DDC | 4007 | Finlux | 4006 | Intervision | 4048, 4219 |
| Artec | 4100 | Delega | 4007 | FinnSat | 4050, 4052 | ITT Nokia | 4006 |
| Asat | 4053, 4055 | Dew | 4050 | Flair Mate | 4217 | Jerrold | 4019 |
| ASLF | 4217 | Diamond | 4051 | Foxtel | 4222, 4244, 4245, 4246, 4247 | Johansson | 4013 |
| Astacom | 4216 | Digiality | 4219 | Freecom | 4001, 4049, 4218 | JOK | 4216 |
| Astra | 4009, 4011, 4054, 4217, 4219 | Digital Stream | 4105 | FTEmaximal | 4024, 4217 | JSR | 4048 |
| Astro | 4004, 4008, 4010, 4015, 4024, 4213, 4218, 4219 | DIRECTV | 4056, 4064, 4067, 4068, 4070, 4071, 4074, 4107, 4116, 4119, 4121, 4122, 4123, 4127, 4192, 4193, 4194, 4195, 4196, 4197, 4198, 4199, 4200, 4201, 4202, 4203, 4206, 4207, 4221 | Fuba | 4001, 4008, 4014, 4015, 4024, 4055, 4215 | JVC | 4029, 4065, 4089, 4117 |
| AudioTon | 4004, 4048 | Discoverer | 4212 | Galaxis | 4005, 4008, 4009, 4024, 4048, 4050, 4215, 4222, 4246 | Kamm | 4217 |
| Aurora | 4222, 4246 | Discovery | 4216 | GE | 4066, 4093, 4111, 4197 | Kathrein | 4015, 4034, 4042, 4053, 4055, 4063, 4215, 4216, 4217 |
| Austar | 4222, 4246 | Diseqc | 4216 | General Instrument | 4019, 4073 | Kathrein Eurostar | 4215 |
| Axiel | 4216 | Dish Network | 4018, 4065, 4089, 4092, 4094, 4095, 4117 | GMI | 4011 | Klap | 4216 |
| Axis | 4008, 4009, 4024, 4050 | Dishpro | 4018, 4117 | GOI | 4117 | Konig | 4219 |
| BBK | 4205 | Distrisat | 4053 | Goldbox | 4213 | Kosmos | 4049 |
| Best | 4008, 4024 | Ditristrad | 4048 | GoldStar | 4049 | KR | 4004 |
| Blaupunkt | 4015 | DNT | 4014, 4053, 4055 | Goodmans | 4002, 4006, 4029 | Kreiselmeier | 4015 |
| Blue Sky | 4217 | Drake | 4072 | Goodmind | 4111 | K-SAT | 4217 |
| Boca | 4011, 4054, 4059, 4217 | DStv | 4222, 4246 | Grandin | 4031 | Kyostar | 4001 |
| Boston | 4216 | Dune | 4024, 4240, 4242 | Grothusen | 4001, 4049 | L&S Electronic | 4024 |
| Brain Wave | 4013 | Echostar | 4014, 4018, 4065, 4089, 4117, 4217 | Grundig | 4004, 4006, 4015, 4035, 4211, 4218, 4222, 4246 | Lasat | 4008, 4010, 4024, 4054, 4212, 4215, 4219 |
| Broadcast | 4012 | Einhell | 4001, 4005, 4011, 4217, 4218 | Hänsel & Gretel | 4219 | Lasonic | 4108 |
| Broco | 4217 | Elap | 4216, 4217 | Hantor | 4001, 4013 | Lenco | 4001, 4024, 4049, 4215, 4217, 4219 |
| BSkyB | 4035, 4041 | Elekta | 4010 | Hanuri | 4010 | Leng | 4013 |
| BT | 4216 | Elsat | 4217 | Hauppauge | 4044 | Lennox | 4048 |
| Bubu Sat | 4217 | Elta | 4001, 4008, 4024, 4048, 4053, 4055 | Heliocom | 4219 | Lenson | 4218 |
| Bush | 4006, 4045 | Emanon | 4001 | Helium | 4219 | Lexus | 4053 |
| Cambridge | 4218 | Emme Esse | 4008, 4024 | Hinari | 4007 | LG | 4049, 4103, 4107 |
| Canal Satellite | 4213 | Engel | 4217 | Hirschmann | 4015, 4024, 4210, 4216, 4218, 4219 | Lifesat | 4008, 4024, 4212, 4217 |
| Canal+ | 4213 | Ep Sat | 4006 | Hisawa | 4013 | Lifetec | 4008 |
| CaptiveWorks | 4099 | EURIEULT | 4031 | Hisense | 4016 | Lorenzen | 4219 |
| Channel Master | 4007, 4110 | Eurodec | 4052 | Hitachi | 4006, 4114, 4199, 4203 | Lorraine | 4049 |
| Chaparral | 4075 | Europa | 4053, 4218, 4219 | Homecast | 4084, 4085, 4087 | Lupus | 4008, 4024 |
| CHEROKEE | 4216 | Europhon | 4219 | Houston | 4048 | Luxor | 4218 |
| Chess | 4212, 4217 | Eurosat | 4011 | HTS | 4117 | Lyonnaise | 4052 |
| CityCom | 4006, 4215, 4219 | Eurosky | 4008, 4011, 4215, 4218, 4219, 4024 | Hughes | 4064, 4068, 4192, 4194, 4196, 4202 | Macab | 4052 |
| Clatronic | 4013 | Eurostar | 4011, 4215, 4219 | Hughes Network Systems | 4202 | Magnavox | 4127, 4101 |
| CNT | 4010 | Eutelsat | 4217 | Humax | 4071 | Manata | 4031, 4216, 4217 |
| Comag | 4080, 4081, 4082, 4083, 4086 | Exator | 4001, 4004 | Huth | 4025, 4030, 4060, 4097 | Manhattan | 4006, 4010, 4048, 4216 |
| Commlink | 4005 | Expressvu | 4117 | Hypson | 4005, 4011, 4012, 4013, 4048, 4050, 4219, 4223 | Maspro | 4055 |
| Comtech | 4050 | Fenner | 4024, 4212, 4217 | Ilo | 4016 | Matsui | 4010 |
| Condor | 4008, 4024, 4219 | Ferguson | 4006, 4052, 4214 | Imex | 4031 | Max | 4219 |
| Connexions | 4014, 4024 | Fidelity | 4218 | Innovation | 4008 | Mediabox | 4213 |
| Conrad | 4024, 4215, 4218, 4219 | | | Insighia | 4107 | Mediamarkt | 4011 |
| Conrad Electronic | 4217, 4219 | | | | | Mediasat | 4009, 4213, 4218 |
| Contec | 4050 | | | | | Medion | 4008, 4024, 4217 |
| Coolsat | 4096 | | | | | Medison | 4217 |
| Cosat | 4048 | | | | | | |
| Coship | 4109 | | | | | | |
| Crown | 4011 | | | | | | |
| Daeryung | 4014 | | | | | | |

| | | | | | | | |
|------------------|--|-------------|--|---------------|--|------------|--|
| Mega | 4053, 4055 | Paysat | 4127 | Satelco | 4024 | Telecom | 4217 |
| Memorex | 4127 | PCT | 4110 | Satford | 4012 | Telefunken | 4001, 4017, 4216 |
| Metronic | 4001, 4004, 4005, 4010, 4028, 4031, 4217 | Philco | 4101 | Satmaster | 4012 | Telesa | 4004, 4011, 4014, 4218, 4219 |
| Metz | 4015 | Philips | 4006, 4033, 4053, 4055, 4061, 4068, 4071, 4127, 4196, 4201, 4202, 4203, 4206, 4213, 4216 | Satplus | 4212 | Telemaster | 4010 |
| Micro electronic | 4217, 4218, 4219 | Phoenix | 4050 | Schneider | 4008, 4212, 4216 | TELENET | 4241 |
| Micro Technology | 4217 | Phonotrend | 4006, 4005, 4048 | Schwaiger | 4051, 4212, 4219 | Telesat | 4219 |
| MicroGem | 4106 | Pioneer | 4046, 4213 | SCS | 4215 | Telestar | 4212, 4213, 4218 |
| Micromaxx | 4008, 4024 | Polsat | 4052 | Seemann | 4009, 4011, 4014 | Televés | 4006, 4218 |
| Microstar | 4008 | Predki | 4013 | SEG | 4001, 4008, 4013, 4024 | Telewire | 4048 |
| Microtec | 4217 | Premiere | 4048, 4213 | Seleco | 4048 | Tempo | 4223 |
| Minerva | 4015 | Priesner | 4011 | Servi Sat | 4031, 4217 | Tevion | 4008, 4217 |
| Mitsubishi | 4006, 4015, 4202 | Primestar | 4076 | Siemens | 4015 | Thomson | 4006, 4020, 4052, 4058, 4208, 4213, 4215, 4216, 4217, 4219 |
| Mitsumi | 4054 | Profile | 4216 | Silva | 4049 | Thorens | 4051 |
| Morgan's | 4011, 4053, 4054, 4055, 4217 | Promax | 4006 | Skantin | 4217 | Thorn | 4006 |
| Motorola | 4019, 4088, 4090, 4091 | Prosat | 4005, 4007 | Skardin | 4009 | Tivax | 4104 |
| Multichoice | 4222, 4246 | Proscan | 4066, 4093, 4122, 4197 | Skinsat | 4218 | Tivo | 4196 |
| Multitec | 4212 | Protek | 4051 | SKR | 4217 | Tokai | 4053 |
| Muratto | 4049 | Proton | 4016 | Skymaster | 4005, 4017, 4022, 4212, 4217 | Tonna | 4006, 4012, 4048, 4217, 4218 |
| Mysat | 4217 | Provision | 4010 | Skymax | 4053, 4055 | Toshiba | 4194, 4202, 4203 |
| Navax | 4013 | Quadral | 4005, 4007, 4008, 4216, 4024 | SkySat | 4212, 4217, 4218, 4219 | Triad | 4049 |
| Neuhaus | 4009, 4048, 4217, 4218, 4219 | Quelle | 4015, 4215, 4219 | Skyvision | 4048 | Triasat | 4218 |
| Neusat | 4217 | Quiero | 4052 | SM Electronic | 4212, 4217 | Triax | 4015, 4215, 4217, 4218 |
| Next Level | 4019 | RadioShack | 4019 | Smart | 4215, 4217 | Turnsat | 4217 |
| NextWave | 4223 | Radiola | 4053, 4055 | Sony | 4067, 4070, 4213 | Tvonic | 4214 |
| Nikko | 4011, 4217 | Radix | 4014, 4037 | SR | 4011, 4054 | Twinner | 4031, 4217 |
| Nokia | 4006, 4040 | Rainbow | 4004 | Star Choice | 4019 | UEC | 4222, 4246 |
| Nordmende | 4001, 4006, 4007, 4010, 4052 | RCA | 4066, 4093, 4112, 4113, 4116, 4118, 4119, 4197, 4122, 4207 | Starland | 4217 | Uher | 4212 |
| Nova | 4222 | Realistic | 4078 | Starring | 4013 | UltimateTV | 4070 |
| Novis | 4013 | Redpoint | 4009 | Start Trak | 4001 | Uniden | 4079, 4127 |
| Oceanic | 4051 | Redstar | 4008, 4024 | Strong | 4001, 4004, 4008, 4024, 4049, 4222, 4246 | Unisat | 4011, 4050, 4053 |
| Octagon | 4001, 4004, 4050 | RFT | 4005, 4053, 4055 | STS | 4115 | Unitor | 4013 |
| Okano | 4011 | Roadstar | 4217 | STVI | 4031 | Universum | 4015, 4215, 4219 |
| Optex | 4048 | Roch | 4031 | Sumida | 4011 | US Digital | 4016 |
| Optus | 4213, 4222, 4223, 4246 | Rover | 4024, 4217 | Sunny Sound | 4024 | Variosat | 4015 |
| Orbitech | 4001, 4212, 4213, 4218 | Saba | 4010, 4215, 4216, 4219 | Sunsat | 4217 | Vega | 4024 |
| OSat | 4004 | Sabre | 4006 | Sunstar | 4011, 4024, 4054 | Ventana | 4053, 4055 |
| Otto Versand | 4015 | Sagem | 4023, 4052 | Supermax | 4223 | Viewsat | 4098 |
| Pace | 4006, 4015, 4035, 4043, 4047, 4204, 4216, 4243 | Sakura | 4050 | Tandberg | 4052 | Visiosat | 4013, 4048, 4216, 4217 |
| Pacific | 4051 | Samsung | 4000, 4001, 4003, 4032, 4064, 4069, 4071, 4120, 4123, 4196, 4200 | Tandy | 4004 | Voom | 4019 |
| Packsat | 4216 | SAT | 4007, 4218 | Tantec | 4006 | Vortec | 4001 |
| Palcom | 4007 | Sat Cruiser | 4223 | TCM | 4008 | Welltech | 4212 |
| Palladium | 4011, 4218 | Sat Partner | 4001, 4004, 4010, 4013, 4049, 4218 | Techniland | 4012 | WeTeKom | 4212, 4218 |
| Palsat | 4212, 4218 | Sat Team | 4217 | TechniSat | 4014, 4021, 4026, 4027, 4038, 4039, 4053, 4212, 4213, 4218 | Wevasat | 4006 |
| Panasat | 4222, 4246 | Satcom | 4012, 4219 | Technology | 4222 | Wewa | 4006 |
| Panasonic | 4006, 4035, 4036, 4121, 4124, 4126, 4198, 4221 | Satec | 4217 | Technosat | 4223 | Winersat | 4013 |
| Panda | 4006, 4219 | | | Technowelt | 4219 | Wisi | 4006, 4014, 4015, 4218, 4219 |
| Pansat | 4125 | | | Teco | 4011, 4054 | Woorisat | 4010 |
| Patriot | 4216 | | | Telador | 4007 | Worldsat | 4216 |
| | | | | Telasat | 4215, 4219 | Xrypton | 4024 |
| | | | | | | XSat | 4217 |

Zehnder 4008, 4209, 4010, 4215, 4024
Zenith 4102, 4107, 4195
Zodiac 4004

CD

Yamaha 5082, 5095, 5114

CD Recorder

Yamaha 5083

MD

Yamaha 5080, 5081, 5086

Tape

Yamaha 5084, 5087

Tuner

Yamaha 5066, 5085, 5088, 5090, 5092

LD

Yamaha 2080

Amplifier

Yamaha 5019, 5020, 5098

Apple TV

Apple 2241

“Apple TV” is a trademark or registered mark of Apple Inc.