



Electone® *STAGEA*®

Upgrading Your STAGEA to the Latest Version via the Internet

* SmartMedia, USB flash memory and an Internet Direct Connection environment, or a Windows or Macintosh computer with internet connection are required.

* The version update using USB flash memory is not applicable to a STAGEA with a version earlier than 1.60. Confirm that your STAGEA is updated to version 1.60 (see “Checking the Current Version” below).

■ Operation

- 1. Check the current version of your STAGEA.**
- 2. Prepare to download the version update data.**
- 3. Download the version update data.**
- 4. Install the version update data.**
- 5. Confirm the version of your STAGEA.**

Checking the current version

- 1. Turn on the STAGEA.**
- 2. Check the current version of the STAGEA.**
 - 2-1 Press the [UTILITY] button on the panel.**
 - 2-2 Press the [Version] button in the display.**

If the current version is prior to the latest version, you'll need to install the version update. Go on to the instructions in the section “Preparing to download the version update data” below.

- 2-3 Press [OK] to close the message.**

Preparing to download the version update data

Make sure that you have an appropriate SmartMedia card or USB flash memory device, formatted for use on the STAGEA, and having enough free space for the version update data.

* If a previous version update data has already been loaded to SmartMedia or USB flash memory, the version update data on the media/device will be deleted and replaced with the new data.

■ For those using USB flash memory for updating

If the current version of your STAGEA is earlier than 1.60, installing the version update data is not possible by using USB flash memory. Start the operation by first checking the version of your STAGEA and making sure that the version is 1.60 or later.

Check that the USB memory device (other USB flash memory or USB-FDD, etc.) is not connected and that a SmartMedia card is not inserted to/in the STAGEA.

- **No USB memory device is connected and no SmartMedia card is inserted.**

There is no problem. Go on to the download operation.

- **SmartMedia card is inserted.**

Please pull out the SmartMedia card until the installation is completed.

- **USB memory device is connected.**

Please disconnect it until the installation is completed. As for a USB-FDD (floppy disk drive), as long as a floppy disk is not inserted, there is no problem.

* We recommend that you connect USB flash memory directly to the STAGEA, and not via a USB hub.

■ If there is not enough empty capacity in SmartMedia or USB flash memory

- You can delete unnecessary data (registration data, etc.) with the STAGEA.
- If you don't have the appropriate SmartMedia card or USB flash memory, you'll have to purchase it. Please use the SmartMedia card or USB flash memory which has been formatted on the STAGEA.

Downloading the version update data

■ Method A

Using Internet Direct Connection



Please access the Internet from the STAGEA and start the operation from the top page.

Insert the SmartMedia or USB flash memory in the STAGEA and press “STAGEA’s version upgrade”, then the download button on the display.

A “downloading...” message appears when the download starts, and a “Download completed” message is shown when the download has been properly completed.

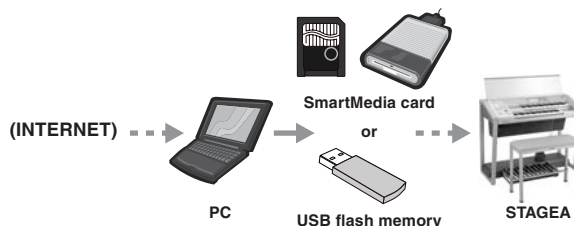
The time necessary for downloading differs depending on your Internet connection and provider. In some cases, this may take more than ten minutes.

For more information on using Internet Direct Connection, refer to the STAGEA Owner’s Manual.

Please go on to the next step when the download is completed.

■ Method B

Using computer with Internet connection



* Only USB flash memory is applicable on the ELS-01/01C typeU.

- **Download the update data to your computer**

Windows:

Access

<http://asia.yamaha.com/en/products/musical-instruments/keyboards/electone/>, select your model (If you are using the ELS-01C or -01C typeU, select “ELS-01C typeU.” If you are using the ELS-01 or -01 typeU, select “ELS-01 typeU.”), click 'Support' tab, then download the version update data, and finally save the file “els-01_01c_01x_v***.exe” (“v***”

indicates the latest version number) to the desired folder on your computer.
 The time necessary for downloading differs depending on your internet connections and provider.
 When the download is completed, double-click on the “els-01_01c_01x_v***.exe” file. Click [Unzip] to extract the installation files to the folder.

Macintosh:

Access

http://asia.yamaha.com/en/products/musical-instruments/keyboards/electone/, select your model (If you are using the ELS-01C or -01C typeU, select “ELS-01C typeU.” If you are using the ELS-01 or -01 typeU, select “ELS-01 typeU.”), click 'Support' tab, then download the version update data. The folder “els-01_01c_01x_v***.zip” (“v***” indicates the latest version number) is created after being extracted automatically to the desktop. (In the case of Mac OS 9, please unzip with ZipIt or StuffIt Expander (version 6.5 or later)).

The time necessary for downloading differs depending on your internet connections and provider.

• **Copy the update data to SmartMedia card or USB flash memory**

The folder contains:

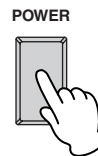
- ELS-01XINST.PRG
- ELS-01XMAINBOOT.PRG
- ELS-01Xmainprg1.prg
- ELS-01Xmainprg2.prg
- ELS-01Xmainprg3.prg
- ELS-01Xmainprg4.prg
- ELS-01Xmainprg5.prg
- ELS-01Xmainprg6.prg
- ELS-01Xmainprg7.prg
- ELS-01Xmainprg8.prg

Copy these files to the root folders (shown directly underneath the drive name) of the SmartMedia card or USB flash memory.
 Remove the SmartMedia card or USB flash memory.

Installing the version update data

Be sure to carefully follow all the installation instructions below.

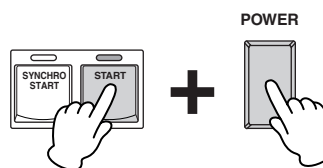
1. Turn off the power of the STAGEA once.



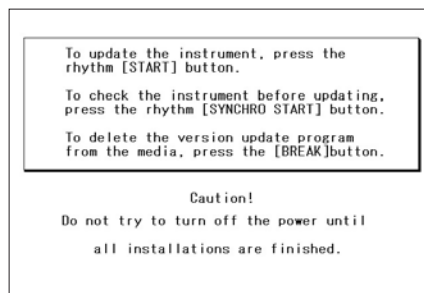
2. With the SmartMedia card or USB flash memory device containing the version update inserted/connected, simultaneously hold down the [START] button in the Rhythm section on the panel and turn on the power switch.



Make sure that you do not disconnect the SmartMedia card or USB flash memory, or turn off the power during the operation. Doing so may result in damage to the STAGEA.



Keep pressing down the [START] button until the following message appears in the display.



3. Install the version update data.

● **When executing the operation check program and installing the version update data**

Please go to Step 4, “Execute the program check and install the version update.”

- Checking the program and installation takes a maximum of sixty minutes.
- The version update starts automatically after the check is completed.

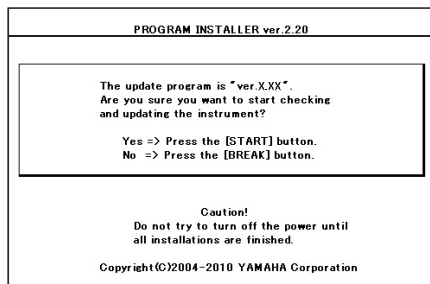
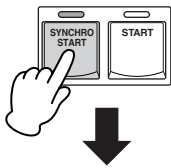
● **When installing the version update data only (without program check)**

Go on to Step 5, “Installing the version update data.”

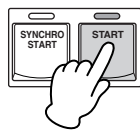
- Installation takes about ten minutes to complete.
- Only installation of the version update is performed.

4. Execute the program check and install the version update.

Press the [SYNCHRO START] button in the Rhythm section on the panel. The following display appears.

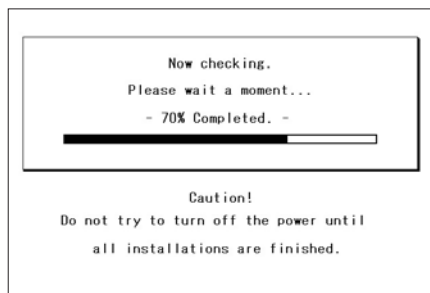


Confirm the version number to be installed, then press the [START] button to start the program check and install the version update.



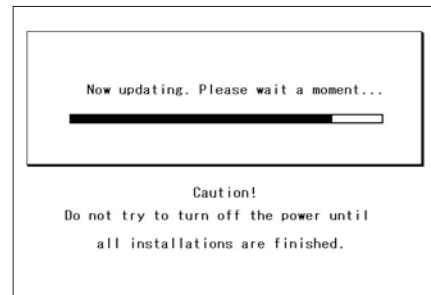
While the program check is in progress, the display below is shown.

If your particular STAGEA is not included in the supported instruments (according to its serial number) for the program check, the check is skipped automatically and the version update is installed.



* "X.XX" indicates the version number installed.

Installation of the version update will be automatically be executed regardless of the check results when the check is finished.



Program check and version update are completed when the message of the check result and the completion of the installation of the version update data is shown in the display.

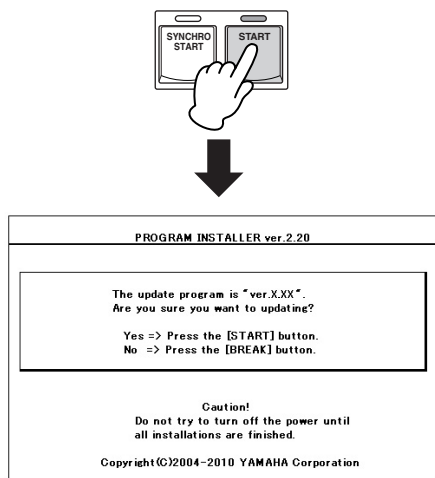
Turn off the STAGEA and disconnect the SmartMedia card or USB flash memory.



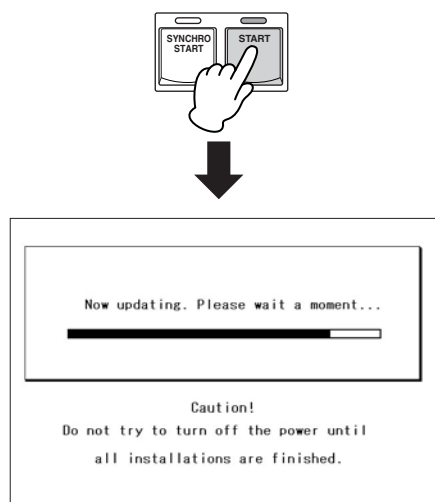
- * "X.XX" indicates the version number installed.
- * If the check results in an error, follow the message shown in the display.

5. Installing the version update data.

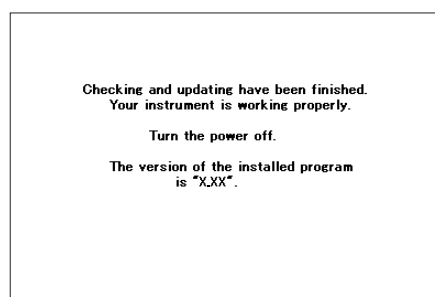
Press the [START] button in the Rhythm section on the panel. The following display appears.



Confirm the version number to be installed, then press the [START] button to start installing the version update.



The version update is complete when the completion message below appears. Turn off the STAGEA and disconnect the SmartMedia card or USB flash memory.



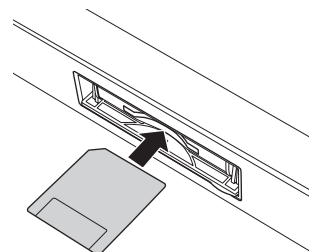
Supplemental instructions

If you are using a STAGEA with a version of 1.50 or later, it is possible to delete the version update data in the SmartMedia card or USB flash memory with the STAGEA.

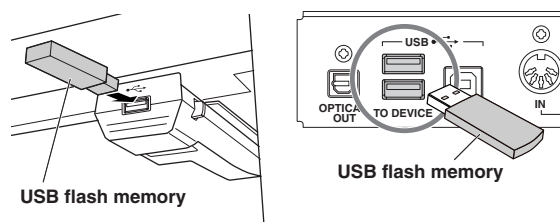
Deleting the version update data

1. Insert the SmartMedia or USB flash memory with the version update data.

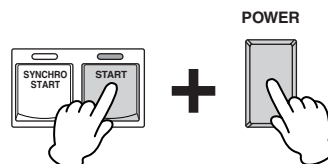
- * With the terminal (gold-plated) part of the SmartMedia card face down, insert it in the card slot until a click sound is heard.
- * Make sure to insert the SmartMedia card in the correct position (up/down and front/back).



- * Check the connector of the USB flash memory device and insert it firmly into the USB TO DEVICE terminal located under the keys.



2. Simultaneously hold down the [START] button in the Rhythm section on the panel and turn on the power switch.



Keep holding down the [START] button until the display below (or a similar one) appears.

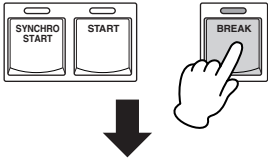
To update the instrument, press the rhythm [START] button.

To check the instrument before updating, press the rhythm [SYNCHRO START] button.

To delete the version update program from the media, press the [BREAK] button.

Caution!
Do not try to turn off the power until all installations are finished.

3. Press the [BREAK] button in the Rhythm section on the panel.

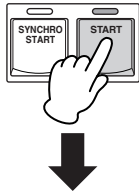


Are you sure you want to continue?

Yes => Press the [START] button.
No => Press the [BREAK] button.

Caution!
Do not try to turn off the power until all installations are finished.

4. The Delete operation starts when you press the [START] button in the Rhythm section.



- PROGRAM 4 -
Now deleting. Please wait a moment...

Caution!
Do not try to turn off the power until all installations are finished.

Make sure that you do not disconnect the SmartMedia card or USB flash memory, or turn off the power during the Delete operation. Doing so may result in damage to the SmartMedia card or USB flash memory.

5. The Delete operation is complete when the message below appears in the display. Turn off the STAGEA and disconnect the SmartMedia card or USB flash memory device.

The install data was deleted.
Turn the power off.

