



NX-U10

USB POWERED SPEAKER

OWNER'S MANUAL

CAUTION: Read this before operating your unit.

To assure the finest performance, please read this manual carefully. Keep it in a safe place for future reference.

- 1 Install this unit in a well ventilated, cool, dry, clean place - away from direct sunlight, heat sources, vibration, dust, moisture, and/or cold. (Do not use/keep this unit in a car etc.)
- 2 Locate this unit away from other electrical appliances, motors, or transformers to avoid humming sounds.
- 3 Do not expose this unit to sudden temperature changes from cold to hot, and do not locate this unit in an environment with high humidity (i.e. a room with a humidifier) to prevent condensation inside this unit, which may cause an electrical shock, fire, damage to this unit, and/or personal injury.
- 4 Avoid installing this unit where foreign objects may fall onto this unit and/or this unit may be exposed to liquid dripping or splashing. On the top of this unit, do NOT place:
 - Other components, as they may cause damage and/or discoloration on the surface of this unit.
 - Burning objects (i.e. candles), as they may cause fire, damage to this unit, and/or personal injury.
 - Containers with liquid in them, as they may fall and liquid may cause electrical shock to the user and/or damage to this unit.
- 5 Do not cover this unit with a newspaper, tablecloth, curtain, etc. in order not to obstruct heat radiation. If the temperature inside this unit rises, it may cause fire, damage to this unit, and/or personal injury.
- 6 Do not plug this unit into a AC wall outlet until all connections are complete.
- 7 Do not operate this unit upside-down. They may overheat, possibly causing damage.
- 8 Do not use force on switches, knobs and/or cords.
- 9 When disconnecting the USB/AC adaptor from the wall outlet, grasp the USB/AC adaptor; do not pull the cord.
- 10 Do not clean this unit with chemical solvents; this might damage the finish. Use a clean, dry cloth.
- 11 Only the voltage specified on this unit must be used. Using this unit with a higher voltage than specified is dangerous and may cause fire, damage to this unit, and/or personal injury. Yamaha will not be held responsible for any damage resulting from use of this unit with a voltage other than that specified.
- 12 Do not attempt to modify or fix this unit. Contact qualified Yamaha service personnel when any service is needed. The cabinet should never be opened for any reason.
- 13 When not planning to use this unit for long periods of time (i.e. when going on vacation), disconnect the USB/AC adaptor from the AC wall outlet.
- 14 Be sure to read the "TROUBLESHOOTING" section regarding common operating errors before concluding that the unit is faulty.

- 15 Before moving this unit, press POWER to set this unit to off, and disconnect the USB/AC adaptor from the wall outlet.
- 16 Be sure to use the USB/AC adaptor supplied with this unit. Using an USB/AC adaptor other than the one provided may cause fire or damage to this unit.
- 17 Install this unit near the wall outlet and where the USB/AC adaptor can be reached easily.
- 18 For added protection for this product during a lightning storm, or when it is left unattended and unused for long periods of time, unplug it from the wall outlet. This will prevent damage to the product due to lightning and power-line surges.
- 19 The batteries shall not be exposed to excessive heat such as sunshine, fire or the like.

This unit features a magnetically shielded design, but there is still a chance that placing it too close to a TV set might impair picture color. Should this happen, move this unit away from the TV set.

■ For U.K. customers

If the socket outlets in the home are not suitable for the plug supplied with this appliance, it should be cut off and an appropriate 3 pin plug fitted. For details, refer to the instructions described below.

Note

The plug severed from the mains lead must be destroyed, as a plug with bared flexible cord is hazardous if engaged in a live socket outlet.

■ Special Instructions for U.K. Model

IMPORTANT

THE WIRES IN MAINS LEAD ARE COLOURED IN ACCORDANCE WITH THE FOLLOWING CODE:

Blue: NEUTRAL

Brown: LIVE

As the colours of the wires in the mains lead of this apparatus may not correspond with the coloured markings identifying the terminals in your plug, proceed as follows:

The wire which is coloured BLUE must be connected to the terminal which is marked with the letter N or coloured BLACK. The wire which is coloured BROWN must be connected to the terminal which is marked with the letter L or coloured RED.

Making sure that neither core is connected to the earth terminal of the three pin plug.

CONTENTS

FEATURES	1
SUPPLIED ACCESSORIES.....	1
CONTROLS AND FUNCTIONS.....	1
CONNECTIONS	2
1 When using USB bus power	2
2 When using the USB/AC adaptor.....	4
3 When using batteries	5

USING THIS UNIT	6
About the status indicator (LED).....	6
TROUBLESHOOTING.....	7
SPECIFICATIONS	7

FEATURES

◆ 3 way power supply

You can choose one of three power supplies according to your usage circumstances: USB bus power, USB/AC adaptor or batteries.

◆ Digital sound reproduction

The USB connection provides clear sound with little noise.

◆ Real stereo sound

The high quality amplifier, titanium diaphragm and Yamaha's unique SR-BASS technology achieve high quality sound.

◆ High 20 W power

Yamaha's original power technology enables an impressive 20 W output (Max. Instantaneous Power).

◆ Auto loudness function

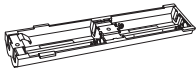
This unit is equipped with an auto loudness function that strengthens the bass sound while playing at low volumes to achieve a more solid sound.

SR-Bass

"Swing Radiator Bass™" is a trademark of YAMAHA CORPORATION.

SUPPLIED ACCESSORIES

Please check that you received all of the following parts.



Battery holder



Carrying case

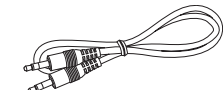


USB/AC adaptor

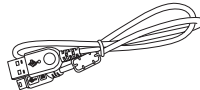
The shape of the adaptor may vary depending on the area where you purchased.



Non-skid pad x 2
(including 1 spare)



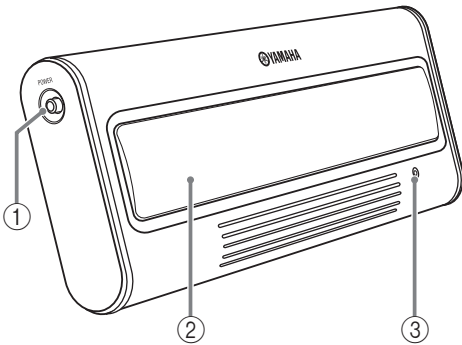
3.5 mm stereo mini plug cable
(0.5 m (19-11/16"))



USB cable
(1 m (39-3/8"))

(U.S.A. and Canada models:	WJ84090)
(Taiwan model:	WJ84540)
(China model:	WJ84570)
(Australia model:	WJ84590)
(Europe and Asia models:	WJ84610)
(U.K. model:	WJ84620)
(Korea model:	WJ84640)

CONTROLS AND FUNCTIONS



① POWER switch

Turns this unit on. Press this switch again to turn this unit off. When this unit is on, the status indicator (LED) lights up.

② Speaker

Outputs the sound of the connected device.

③ Status indicator (LED)

Indicates the current status of this unit. For details, refer to "About the status indicator (LED)" on page 6.

④ VOLUME dial

Adjusts the volume level. Rotate the dial in the direction of the + symbol to increase the volume and in the direction of the - symbol to decrease the volume.

⑤ PORTABLE jack

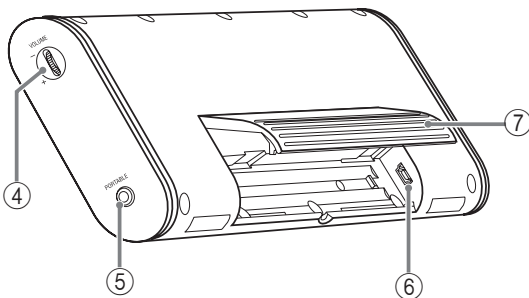
Connect a portable audio player, etc. to this jack.

⑥ USB jack

Connect the small plug of the USB cable to this jack.

⑦ Stand

Use the stand when you set up this unit.



CONNECTIONS

Use the procedure below to choose one of the three power supplies according to your usage circumstances.

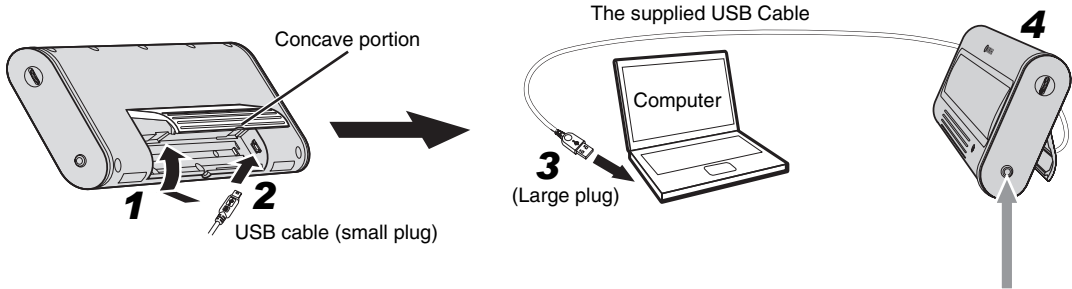
- 1 When using USB bus power (this page)**
- 2 When using the USB/AC adaptor (page 4)**
- 3 When using batteries (page 5)**

Notes

- Before connecting, make sure that POWER switch on this unit is turned off.
- Before connecting, make sure that VOLUME dial on this unit is set to the minimum.

1 When using USB bus power

When you connect the USB port for the first time, you need to download USB drivers into your computer. For the procedure of the installing USB drivers, see “Installation of USB drivers” on page 3.



- 1 Press and hold the concave portion on the stand and open it upward.**
- 2 Connect the small plug of the supplied USB cable to the USB jack of this unit.**
- 3 Connect the large plug of the USB cable to the USB port of your computer.**

Note

Never connect your computer via an USB hub. This unit may not work properly.

- 4 Put this unit on a flat surface (a desk etc.) using the stand.**

Note

When setting up this unit, do not apply force to the top of this unit. Doing so may cause damage or break the stand.

The diagram shows a portable audio player connected to a computer via a 3.5 mm stereo mini plug cable. The cable is labeled '3.5 mm stereo mini plug cable'. The audio player is shown with a 'PORTABLE' jack and a 'COMPUTER' jack. The computer is shown with a 'PORTABLE' jack and a 'COMPUTER' jack. The cable is connected between the 'PORTABLE' jack of the audio player and the 'PORTABLE' jack of the computer.

Enjoying sounds of a portable audio player using the USB bus power

You can also enjoy the sound of a portable audio player using a computer as power source when you connect a portable audio player to the PORTABLE jack of this unit using the supplied 3.5 mm stereo mini plug cable.

Note

In this case, the sound output from this unit is mixed with the sound from your computer. Adjust the mixing level using volumes of your computer's media player or your portable audio player.

■ Installation of USB drivers

The installation procedure is variable depending on OS. After "Common operations" below, follow the installation procedure for your OS.

- You may need the CD-ROM of the OS running on your computer to install the device drivers. For details, refer to the manuals of your computer.
- The following installation procedures for the device driver installation method may not be applicable to certain PC environments. In this case, follow the instructions given in the displayed dialog boxes. Consult the PC manufacturer or your computer dealer in case of doubt.
- When you change the connecting USB port to another one, it may be required to reinstall the USB driver.
- The displayed messages etc. may vary depending on your computer or OS.
- When installing USB drivers into an OS other than the ones mentioned below, refer to the manuals of your computer.

Common operations

- 1 Switch on your computer to boot the OS.**
- 2 Connect this unit to your computer.**

For the connection method, see steps 1 to 4 in "1 When using USB bus power" on page 2.

Installing on Windows Vista, Windows XP, Windows 2000 or Mac OS*

Press POWER to switch on this unit.

Your computer detects this unit and installs the necessary devices automatically.

This unit gets ready for use after completion of the installation.

* (Mac OS 9.1 or later, Mac OS X 10.0 or later)

Installing on Windows Me

- 1 Press POWER to switch on this unit.**
- 2 Install the USB-Compatible Device.**

Your computer automatically detects the "USB-Compatible Device" and installs it.
- 3 Install the USB Audio Device.**

[Add New Hardware Wizard] is displayed

▼

Window: [Windows has found the following new hardware]
Check "USB Audio Device" is displayed
Window: When [Digital signature confirmation] is displayed
Check "USB Audio Device" is displayed
Select [Yes]
▼ Click [OK]
Select "Automatic search for a better driver. [Recommended]"
▼ Click [Next]
Your computer automatically detects the "USB Audio Device" and installs it.
Check "Windows has finished installing the software for the new hardware device" is displayed
Click [Finish]
- 4 Install the USB Human Interface Device.**

Your computer automatically detects the "USB Human Interface Device" and installs it.
This unit gets ready for use after completion of the installation.

Installing on Windows 98SE

- 1 Press POWER to switch on this unit.**

[Add New Hardware Wizard] is displayed
- 2 Install the USB-Compatible Device.**

Window: [This wizard searches for new drivers for]
Check "USB-Compatible Device" is displayed
▼ Click [Next]
Select "Search for the best driver for your device. [Recommended]"
▼ Click [Next]
Select "CD-ROM Drive"
*At this time, leave the items checked by default.
▼ Click [Next]
Window: When [Add New Hardware Wizard] is displayed
Select "The updated driver [Recommended]"
▼ Click [Next]
Window: [Windows driver file search for the device]
Check "USB-Compatible Device" is displayed
▼ Click [Next]
Check "Windows has finished installing the software that your new hardware device requires." is displayed
Click [Finish]
- 3 Install the USB Human Interface Device.**

Window: [This wizard searches for new drivers for]
Check "USB Human Interface Device" is displayed
▼ Click [Next]
Select "Search for the best driver for your device. [Recommended]"
▼ Click [Next]
Select "CD-ROM Drive"
*At this time, leave the items checked by default.
▼ Click [Next]
Window: [Windows driver file search for the device]
Check "USB Human Interface Device" is displayed
▼ Click [Next]
Check "Windows has finished installing the software that your new hardware device requires." is displayed
Click [Finish]
- 4 Install the USB Audio Device.**

Window: [This wizard searches for new drivers for]
Check "USB Audio Device" is displayed
▼ Click [Next]
Select "Search for the best driver for your device. [Recommended]"
▼ Click [Next]
Select "CD-ROM Drive"
*At this time, leave the items checked by default.
▼ Click [Next]
Window: [Windows driver file search for the device]
Check "USB Audio Device" is displayed
▼ Click [Next]
Check "Windows has finished installing the software that your new hardware device requires." is displayed
Click [Finish]
This unit gets ready for use after completion of the installation.

When the inserted Windows 98SE CD-ROM is not recognized

Even when the CD-ROM is inserted, your computer may display an error message if it cannot find the location of the CD-ROM drive. In this case, it is required to specify the location manually.

If this error occurs during installation of USB Human Interface Device:

Window: [Disc insertion] (Error message)

▼ Click [OK]

Window: [Open]

"Drive (V):" (Pull-down menu)

↳ Select the drive in which the CD-ROM is inserted

"Folder (F):" (Field)

↳ Select [win98]

"Filename (N):" (Field)

↳ Select [base6.cab]

▼ Click [OK]

Window: [Copy File]

"File Copy Source (C):" (Field)

↳ Check the drive name selected above

▼ Click [OK]

Check "Windows has finished installing the software that your new hardware device requires." is displayed

Click [Finish]

If this error occurs during installation of USB Audio Device:

Window: [Disc insertion] (Error message)

▼ Click [OK]

Window: [Open]

"Drive (V):" (Pull-down menu)

↳ Select the drive in which the CD-ROM is inserted

"Folder (F):" (Field)

↳ Select [win98]

"Filename (N):" (Field)

↳ Select [driver21.cab]

▼ Click [OK]

Window: [Copy File]

"File Copy Source (C):" (Field)

↳ Check the drive name selected above

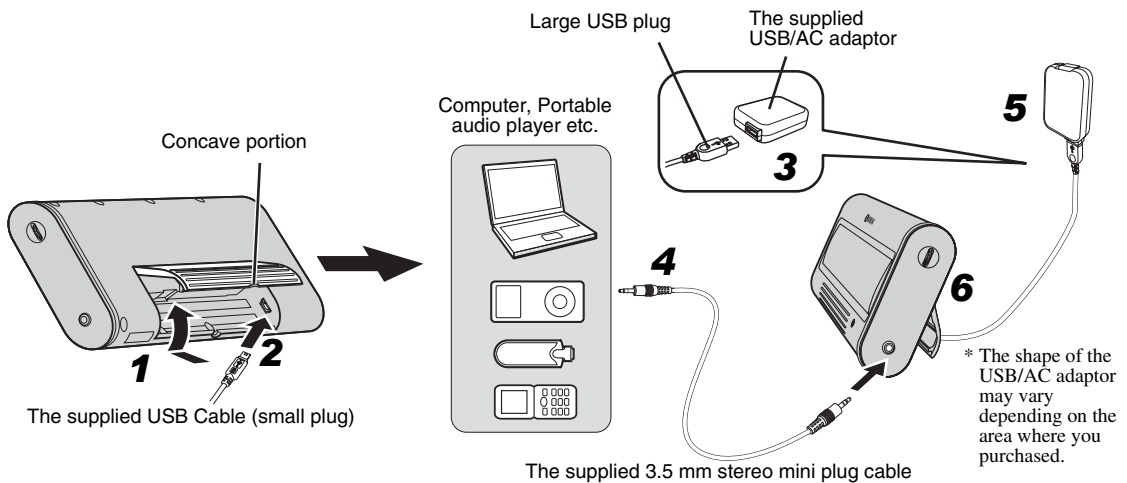
▼ Click [OK]

Check "Windows has finished installing the software that your new hardware device requires." is displayed

Click [Finish]

- Windows is a registered trademark of Microsoft Corporation in the United States and/or other countries.
- Macintosh is a trademark of Apple Computer, Inc., registered in the United States and other countries.

2 When using the USB/AC adaptor



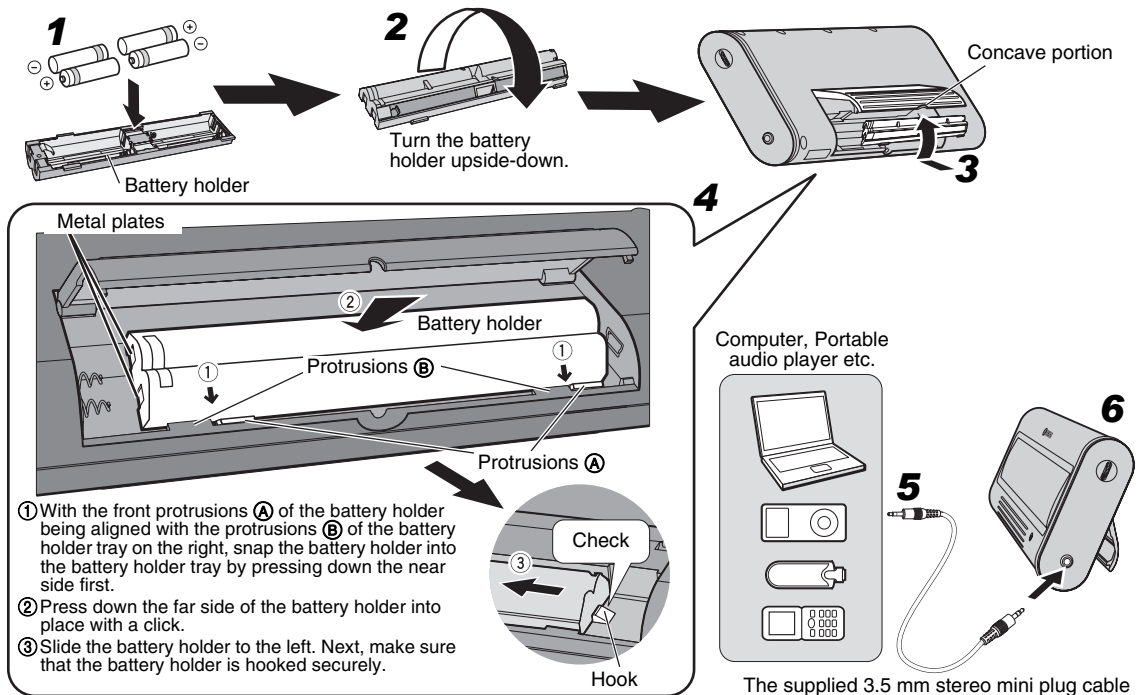
- 1** Press and hold the concave portion on the stand and open it upward.
- 2** Connect the small plug of the supplied USB cable to the USB jack of this unit.
- 3** Connect the large plug of the USB cable to the USB/AC adaptor.

- 4** Connect an audio output jack of your portable audio player and the PORTABLE jack of this unit using the supplied 3.5 mm stereo mini plug cable.
- 5** Plug the USB/AC adaptor to the AC wall outlet.
- 6** Put this unit on a flat surface (a desk etc.) using the stand.

Note

When setting up this unit, do not apply force to the top of this unit. Doing so may cause damage or break the stand.

3 When using batteries



You cannot insert the battery holder into this unit when connecting the USB plug. Unplug the USB cable from this unit before inserting the battery holder.

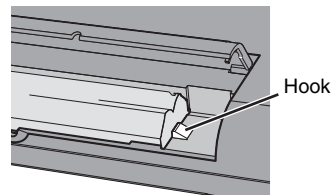
- 1 Insert 4 commercially available AAA, R03, UM-4 batteries (alkaline or nickel-hydride batteries) into the battery holder.**
Make sure you insert the batteries according to the polarity markings (+ and -).
- 2 Turn the battery holder upside-down.**
- 3 Press and hold the concave portion on the stand and open it upward.**
- 4 Insert the battery holder into this unit.**
- 5 Connect an audio output jack of your portable audio player and the PORTABLE jack of this unit using the supplied 3.5 mm stereo mini plug cable.**
- 6 Put this unit on a flat surface (a desk etc.) using the stand.**

Note

When setting up this unit, do not apply force to the top of this unit. Doing so may cause damage or break the stand.

When removing the battery holder

Push down the hook, and then slide the battery holder rightward to remove the battery holder.



About batteries

Notes

- We recommend using alkaline or nickel-hydride batteries. Manganese batteries provide short battery life.
- Do not use an old battery together with a new one.
- Do not use different types of batteries (such as alkaline and nickel-hydride batteries) together. Each type of battery has its own characteristics even if they are similar in shape.
- When not planning to use this unit for long periods of time (for more than 1 month), remove the batteries from the battery holder.
- If the batteries have leaked, dispose of them immediately. Avoid touching the leaked material or letting it come into contact with clothing, etc. Clean the battery compartment thoroughly before installing new batteries.
- Do not throw away batteries with general house waste; dispose of them correctly in accordance with your local regulations.

USING THIS UNIT

- 1 Press POWER to turn this unit on. (The status indicator (LED) lights up.)**
- 2 Start playback of your computer's media player or your portable audio player.**
- 3 Adjust the volume level using VOLUME on this unit.**

Note

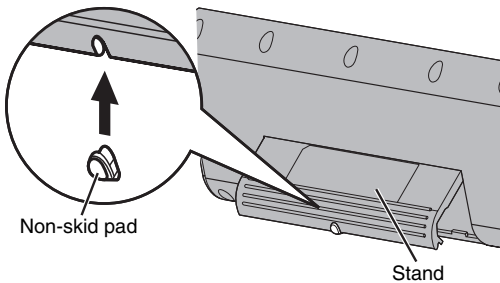
Do not unplug the USB cable from your computer during playback. Doing so may cause your computer to freeze.



- When connecting to your computer, we recommend that adjusting the volume level using VOLUME on this unit after setting the volume level of your computer and media player to the maximum.
- When not using this unit, turn its power off to save power.

■ About the non-skid pad

When playing back a source with low frequency sounds, this unit may vibrate. To get rid of the vibration noise, attach the supplied non-skid pad.



■ After using this unit

- 1 Rotate VOLUME to set this unit's volume level to the minimum.**
- 2 Stop playback of your computer's media player or your portable audio player.**
- 3 Press POWER to turn this unit off. (The status indicator turns off.)**

Note

Do not pull forcibly on the USB cable when disconnecting it. Doing so may damage the USB cable/plug.

About the status indicator (LED)

LED status	The current status of this unit
Lit	This unit is on.
Off	This unit is off, or power supply is not connected.
Turning on and off repeatedly	Limiter control has been activated due to excessive input. (Turn down the volume level until the LED stops flashing.)

TROUBLESHOOTING

If the problem you are experiencing is not listed below, set this unit to off, disconnect the power, and contact the nearest authorized Yamaha dealer or service center.

General

Problem	Cause	Remedy
No sound.	The connection between this unit and the portable audio player or computer is not correct or securely.	Connect securely.
	The volume is set to the minimum.	Increase the volume.

When using the USB bus power

Problem	Cause	Remedy
The volume level cannot be increased even if this unit's VOLUME dial is rotated in the direction of the + symbol.	The setting of audio device on your computer is wrong.	Set the audio device to Windows: "USB Audio DAC" or "USB Audio Device" Macintosh: "USB DAC" or "USB Audio DAC".
No sound from this unit.	Failure to install the USB driver.	Install the USB driver again.
The volume level cannot be increased.	The volume of your computer or the media player is not set to maximum.	Increase the volume.

Note

The limiter is activated temporarily to decrease the volume output when there is a continuous excessive output. While the limiter is activated, the status indicator turns on and off repeatedly. Turn down the volume until the indicator flashing stops.

SPECIFICATIONS

Speaker section

Type.....Yamaha SR-BASS technology

Driver 38 mm Ti-cone full-range driver x 2
Magnetic shielding type

Impedance..... 6 Ω

Amplifier section

Input

Analog (PORTABLE)..... 3.5 mm Stereo mini jack

Digital (USB) USB terminal

Dynamic power 6 W x 2 (1 kHz, 6 Ω)

Max. Instantaneous Power*

..... 10 W x 2 (1 kHz, 6 Ω, 10% THD)

Input sensitivity/Impedance

PORTABLE input300 mV/10 kΩ

Maximum input signal

PORTABLE input2.0 V

Frequency response 90 Hz to 20 kHz

* Refers to the power that can be output for 100 ms continuously.

USB section

Computer

... Computer equipped with a USB port on which a Windows or Macintosh operating system is installed.

OS

..... Windows Vista, XP, 2000, Me, 98SE

..... Mac OS 9.1 or later, Mac OS X 10.0 or later

General

Power Supply

USB bus power.....5 V/500 mA

USB/AC adaptor5 V/500 mA

BatteryAAA, R03, UM-4

Battery life: 3 hours as alkaline

(Output: 10 mW + 10 mW)

Power Consumption (When the USB/AC adaptor is used)

.....Less than 5 W

Dimensions (W x H x D) 248 x 100 x 33 mm
(9-3/4" x 3-15/16" x 1-5/16")

Weight500 g
(1 lbs. 2 oz.)

Please note that all specifications are subject to change without notice.



©2007 YAMAHA CORPORATION All rights reserved.

YAMAHA ELECTRONICS CORPORATION, USA 6660 ORANGETHORPE AVE., BUENA PARK, CALIF. 90620, U.S.A.
YAMAHA CANADA MUSIC LTD. 135 MILNER AVE., SCARBOROUGH, ONTARIO M1S 3R1, CANADA
YAMAHA ELECTRONIK EUROPA G.m.b.H. SIEMENSSTR. 22-34, 25462 RELINGEN BEI HAMBURG, GERMANY
YAMAHA ELECTRONIQUE FRANCE S.A. RUE AMBROISE CROIZAT BP70 CROISSY-BEAUBOURG 77312 MARNE-LA-VALLEE CEDEX02, FRANCE
YAMAHA ELECTRONICS (UK) LTD. YAMAHA HOUSE, 200 RICKMANSWORTH ROAD WATFORD, HERTS WD18 7GQ, ENGLAND
YAMAHA SCANDINAVIA A.B. J A WETTERGRENS GATA 1, BOX 30053, 400 43 VÄSTRA FRÖLUNDA, SWEDEN
YAMAHA MUSIC AUSTRALIA PTY, LTD. 17-33 MARKET ST., SOUTH MELBOURNE, 3205 VIC., AUSTRALIA

YAMAHA CORPORATION
Printed in China © WJ79320-1