



# ARRANGER WORKSTATIONS



PSR-SX900

PSR-SX700

PSR-SX600



# THE NEXT LEVEL PSR-SX

Setting new standards in high-end Digital Workstation sound, design and user experience. The PSR-SX has been meticulously crafted to intensify your performance and enjoyment.







MUSIC WITHOUT  
COMPROMISE



INSPIRE AND  
BE INSPIRED



# THE NEXT LEVEL: PSR-SX

Take your performance to a whole new dimension with the PSR-SX. Replacing the hugely successful PSR-S series, PSR-SX is the new generation in Digital Workstation sound, design and user experience. These instruments will inspire and intensify your musical performance and enjoyment.

## PSR-SX9000



## PSR-SX7000

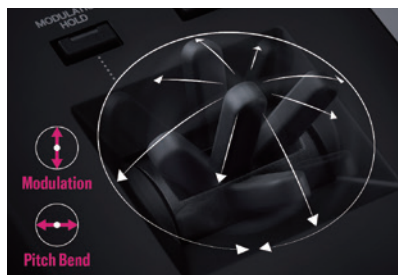




# POWERFUL FEATURES FOR LIVE PERFORMANCE

## Joystick

The joystick offers intuitive pitch and modulation control. Now you can play rapid trills, dynamic pitch bends, and finely-nuanced modulation—all from a single, easily-configured controller.



## FSB Keyboard

The new FSB Keyboard offers remarkable playability thanks to its heavier initial key resistance and greater key travel. The refined keyboard structure, with an adjusted fulcrum, allows you to play comfortably even on the backs of the keys whilst upgraded components suppress horizontal key movement.



## High Quality Output

The audio output of the PSR-SX has been completely overhauled with focus on delivering the highest quality sound from your keyboard. The new Digital Audio Converter (DAC) provides high quality defined sound across a wide frequency range, ensuring the PSR-SX always cuts through the mix.

## Style Section Reset

When playing Styles, easily jump to the beginning of the bar by pressing the [RESET/TAP TEMPO] button. A valuable feature for accompanying singers or performing music with varying time signatures.



# GET INSPIRATION WITH THE SOUND

## Voices & Styles

The PSR-SX has a comprehensive and sonically stunning set of authentic Voices, and accompaniment and rhythmic backing patterns (called "Styles") covering a wide range of musical genres. These let you play more naturally and with greater expressiveness, and single-handedly recreate the sound of a full band or orchestra.

Check out the demo video!



## Keyboard Parts

There are four keyboard parts for your performance: LEFT, RIGHT 1, RIGHT 2 and RIGHT 3, and each part has one Voice. You can combine these parts by using the PART ON/OFF buttons to create rich instrument textures and convenient performance combinations.



## Styles

Accompaniment and rhythmic backing patterns (called "Styles") covering a wide range of musical genres, including pop, jazz, and many more, let you single-handedly recreate the sound of a full band or orchestra.

## Multi Pads

The Multi Pads can be used to play a number of short pre-recorded rhythmic and melodic sequences and loops that allow you to add impact and variety to your keyboard performance.

### Audio Link Multi Pad

Multi Pads not only work with MIDI data, but also allow you to create unique, new pad content with your own audio (WAV) data that can be triggered during your performance.



# CONTROL YOUR MUSIC

## Touch Screen/GUI

The 7" touch display and new graphic user interface provide instinctive



control over the instrument's powerful features.

## Style Assembly

Styles are made up of many instrument parts, such as drums, bass, guitar, piano etc. In Style Assembly it's easy to explore, audition and combine parts from any Style to create your own personal accompaniments.



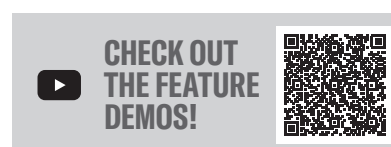
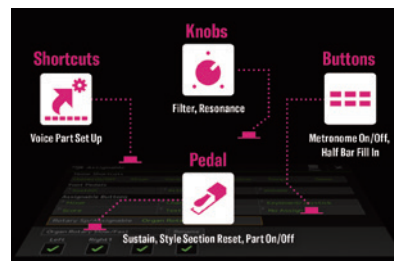
## Playlist and Registration Memory

Playlist is the new convenient way to quickly set up the instrument. Organize Registration Memories into convenient Playlists for instant recall during performance. Playlist makes it easy to manage and call up your songs and the related settings, no matter how large your repertoire.



## Assignable Function

While performing, you often need to act fast to access certain features. Choose from a range of functions to assign to one of six panel buttons, or to the Live Control knobs, pedals or the Home Shortcut menu, then instantly recall your desired function with a single touch.





# UNIQUE PSR-SX900 FEATURES

## Expansive Soundfield Speakers

Polypropylene diaphragms with excellent response provides crisp, high-quality tone, while a new diaphragm structure delivers balanced sound throughout a broad listening area.



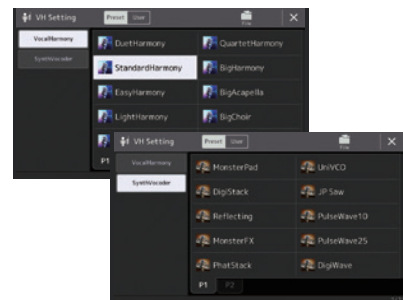
## Sub Output

PSR-SX900 features two sub line-out connections that you can use to adapt your sound to various situations. Try routing bass through a separate subwoofer for a fuller, more powerful bottom end, or send parts and drum instruments to an external console to further shape your sound.



## Vocal Harmony/Synth Vocoder

You can automatically apply various Vocal Harmony effects to your voice as you sing, or you can use the Synth Vocoder to graft the unique characteristics of your voice onto synthesizer and other sounds., for unusual machine-like or robotic effects, as well as unique choir sounds, which you can control through your own singing and playing.



## Chord Looper

Chord Looper lets you record a chord sequence and play it back, freeing your left hand from playing chords and providing new ways to enhance your performance. Since the chords play back in a loop, you don't need to repeat the chord pattern manually anymore—letting you focus on your performance and other operations.



CHORD LOOPER





# PSR-SX600



## Unison & Accent



The powerful Unison & Accent function gives you expressive and nuanced control over

Style playback, letting you create various musical variations in the accompaniment. With the Unison function turned on, you can play a melody and have it reproduced in unison (i.e., the same melody is played by multiple instruments) or tutti (i.e., all parts are played at the same time)—expressively enhancing your performance and letting you create dynamic phrases. With the Accent function turned on, accents are automatically generated by adding notes to Style playback according to your playing strength (or accents you play). This allows you to temporary change or interrupt the regular rhythm patterns.

## Live Controls



The two LIVE CONTROL knobs can be assigned to various different functions, letting you

intuitively control your performance in real-time. For example, you can use the knobs to control the brightness (cutoff frequency) of the sound being played or to correct the tone or timbre of the sound with EQ — letting you easily add variations to the sound without interrupting your performance. You have total control over the performance for maximum creativity!

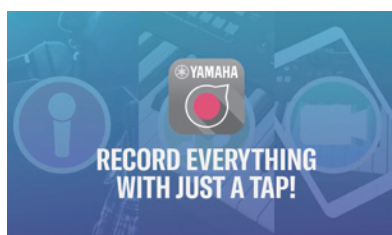
## DSP Effect



DSP (Digital Signal Processor) features built into the PSR-SX600 provide high-quality effect

types, such as real distortion and reverb. You can also apply the DSP effects independently to specified parts, such as guitar, allowing you to play the keyboard dynamically with a distorted guitar sound, or sound like you are playing in a concert hall.

## Rec'n'Share



Rec'n'Share allows you to record audio and video along with songs from your music library

and then share your performances with the world. It digitally enhances the way you practice, record and perform music.





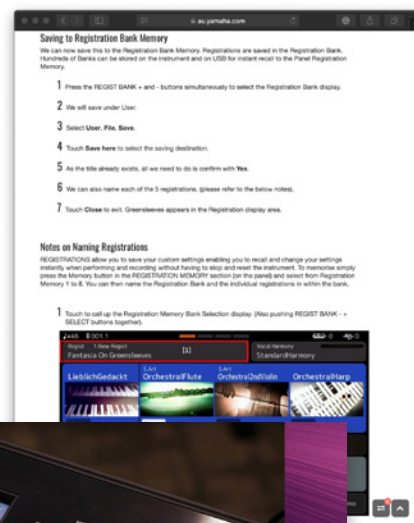
**YAMAHA**  
**KEYBOARD**  
**CLUB**

# NEXT LEVEL SUPPORT

The Yamaha Keyboard Club online is designed to help you get the most out of your Yamaha keyboard. Hosted by Leon Blaher (Yamaha's Senior Product Specialist), the Yamaha Keyboard Club online contains hands-on, easy to follow tutorial videos with supporting printable articles.

Explore below our ever expanding library of tutorials to help you discover more from your Yamaha keyboard.

**[au.yamaha.com/keyboardclub](http://au.yamaha.com/keyboardclub)**



## **PRESENTER | Leon Blaher — Senior Piano & Keyboard Product Specialist**

Having worked with Yamaha since 1992, Leon brings over 40 years of teaching experience with piano, keyboard, and organ to the table. Leon has worked as an examiner with the AGMS for many years as well as a programmer for the AMEB, and has affiliations with Trinity College London, and many other adjudications and eisteddfodau. An accomplished performer, arranger, and programmer, Leon's friendly and interactive communication style make him well equipped to pass on his expertise to others.





# Voice & Style Expansion

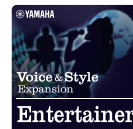
Our world is getting smaller all the time. However, for PSR-SX and PSR-A3000, the musical world is expanding! Thanks to Yamaha's Voice & Style Expansion Packs, you can take advantage of a wide and ever-increasing selection of regional, ethnic and traditional Voices and Styles. Load them into the instrument and instantly play authentic sounds, rhythms and backings in the musical style of your choice!



**EUROPE "Best Of" Collection**  
Essentials from the 4 Packs Celtic, Latin, Balkan & Oriental.



**EURO DANCE**  
From very latest DubStep or Electro beats to House and HipHop grooves.



**MEXICO**  
You will enjoy playing traditional rhythms like Mariachi, Norteno or Corrido, in addition to Latin rhythms as Mambo, Son Cubano, Merengue and Bachata.

\*Specifications and appearance are subject to change without notice

## Yamaha Expansion Manager



Using a computer, Yamaha Expansion Manager expands the versatility of the instrument and is compatible with PSR-SX.

### Tutorial Video on YouTube

Watch and Learn what Yamaha Expansion Manager can do!



### Data Management

Have you ever wanted to install more than one Expansion Pack to your instrument at the same time? With Yamaha Expansion Manager, you can manage Voice, Style, Registration, and other contents, select your favourites and create a custom pack.

### Organise Your Content

Firstly, import your favourite Pack Project files (.ppf file). Select Voices, Styles, and other data. Combine data from various packs and create a personal Pack Installation file (.ppi file). Install the Pack Installation file to your instrument via USB flash memory.

### Voice Creation

Import your own recorded sample data (.wav, .aif, .aiff) or SoundFonts (.sf2). Build your own Voices by controlling various detailed parameters of the sound and create your unique Voice Pack! Using Yamaha Expansion Manager, you can import REX loop file, and use it as Multi Pad or Style performance.



# EXCELLENT BASS FOR MUSIC PERFORMANCE

This compact subwoofer for keyboard instruments incorporates a number of advanced, high-performance bass technologies exclusive to Yamaha, including a Twisted Flare Port and Advanced YST II (Yamaha Active Servo Technology II). This results in sensationally clear bass response, and adds so much to your musical experience whether you're performing or listening.

## KS-SW100



Subwoofer for keyboard instruments

- New Twisted Flare Port contributes to clear and tight bass
- Advanced YST II (Yamaha Active Servo Technology II)
- 20 cm (8") cone woofer
- Stylish addition to any room



## Yamaha MusicSoft

Thanks to Yamaha's new Voice & Style Expansion Packs for the PSR, players can take advantage of a wide selection of regional, ethnic and traditional Voices and Styles. Load them to your PSR and instantly play authentic sounds, rhythm and backing in the musical style of your choice!

[yamahamusicsoft.com](http://yamahamusicsoft.com)

\* Some applications are only available in certain regions.  
\* Specifications may be changed without notice.



## Key Features List

	<b>Number of Keys</b>	Indicates how many keys the keyboard of a specific model possesses.		<b>SONG PLAY/REC</b>	The model plays back preset songs and commercially available MIDI files and allows you to record and save your own performances to the internal drive or USB flash memory as MIDI files.
	<b>Number of Voices</b>	Indicates the number of instrument Voices.		<b>Expansion Packs</b>	Indicates that you can add and enjoy packs of specific Voices and Styles of music.
	<b>Number of Styles</b>	Indicates how many Styles of music you can call on to accompany your performance.		<b>Mic/Guitar Input</b>	Indicates that the model has Microphone or Guitar input so you can connect these to your instrument.
	<b>USB Storage</b>	Indicates that the model has a "USB TO DEVICE" terminal, allowing you to save your data using USB media.		<b>Colour Display</b>	Indicates that the model has colour display.
	<b>AUX IN</b>	Indicates that the model has "AUX-IN" connection so that you can connect a Music Player and play along.		<b>Vocal Harmony 2</b>	Indicates that the model has the Vocal Harmony 2 function.
	<b>PC Connectivity</b>	Indicates that the model has a "USB TO HOST" terminal, allowing you to transfer music data to and from your PC.		<b>Synth Vocoder</b>	Indicates that the model has a Synth Vocoder.
	<b>AUDIO PLAY/REC</b>	The model's USB Audio function allows you to play back WAV files (WAV and MP3 for PSR-SX900, PSR-SX700 and PSR-A3000) from a USB flash memory device and save your songs in WAV format for transfer to a PC to share with friends or create CDs.		<b>Audio Style</b>	Indicates that the model has Audio Styles.
	<b>MIDI Connectivity</b>	Indicates that the model has MIDI.		<b>SUB OUT</b>	Indicates that the model has SUB OUTPUT to adapt your sound to various situations.
	<b>Touch Display</b>	Indicates that the model has Touch screen.		<b>Chord Looper</b>	Indicates that the model has the Chord Looper function.
	<b>Smart Chord</b>	Indicates that the model has the Smart Chord function.		<b>Unison &amp; Accent</b>	Indicates that the model has the Unison & Accent function.
	<b>Rec'n'Share</b>	Indicates that the model has the Rec'n'Share function.			



# Specifications

Models			PSR-SX900	PSR-SX700	PSR-SX600	
Size and Weight	Dimensions [W x D x H]		1,017 x 431 x 139 mm	1,017 x 431 x 139 mm	1,004 x 410 x 134 mm	
	Weight		11.5 kg	11.5 kg	8.1 kg	
Colour/Finish	Body	Colour	Black	Black	Black	
Interface	Keyboard	Number of Keys	61	61	61	
		Type	Organ (FSB), Initial Touch	Organ (FSB), Initial Touch	Organ, Initial Touch	
		Touch Response	Normal, Soft1, Soft2, Hard1, Hard2	Normal, Soft1, Soft2, Hard1, Hard2	Normal, Soft1, Soft2, Hard1, Hard2	
	Controllers	Pitch Bend Wheel	-	-	Yes	
		Modulation Wheel	-	-	Yes	
		Joystick	Yes	Yes	-	
		Multi Pads	Yes (with Audio Link)	Yes (with Audio Link)	Yes (with Audio Link)	
	Display	Knobs	2 (Assignable)	2 (Assignable)	2 (Assignable)	
		Type/Size	7 inch TFT Colour Wide VGA LCD (Touch Screen)	7 inch TFT Colour Wide VGA LCD (Touch Screen)	4.3 inch TFT Colour WVGA LCD	
		Language	English, German, French, Spanish, Italian	English, German, French, Spanish, Italian	English, German, French, Spanish, Italian, Japanese	
Panel	Language	English	English	English		
Voices	Tone Generation	Tone Generating Technology	AWM Stereo Sampling	AWM Stereo Sampling	AWM Stereo Sampling	
	Polyphony	Number of Polyphony (Max.)	128	128	128	
Effects	Preset	Number of Voices	1337 Voices + 56 Drum/SFX Kits	986 Voices + 41 Drum/SFX Kits + 480 XG Voices	850 Voices + 43 Drum/SFX Kits + 480 XG Voices	
	Expandability	Expansion Voice	Yes (approx. 1 GB)	Yes (approx. 400 MB)	Yes (approx. 100 MB)	
	Compatibility		XG (for Song playback), GS (for Song playback), GM, GM2	XG (for Song playback), GS (for Song playback), GM, GM2	XG (for Song playback), GS (for Song playback), GM, GM2	
	Part		Right 1, Right 2, Right 3, Left	Right 1, Right 2, Right 3, Left	Right 1, Right 2, Left	
	Reverb		59 Preset + 30 User	59 Preset + 30 User	52 Preset + 30 User	
	Chorus		106 Preset + 30 User	106 Preset + 30 User	106 Preset + 30 User	
	DSP		322 Presets (with VCM) + 30 User	322 Presets + 30 User	295 Preset + 30 User	
	Insertion Effect		1-8: 322 Preset (with VCM) + 30 User	1-5: 322 Preset + 30 User	-	
	Master Compressor		5 Preset + 30 User	5 Preset + 30 User	5 Preset + 30 User	
	Master EQ		5 Preset + 30 User	5 Preset + 30 User	5 Preset + 30 User	
Styles	Part EQ		28 Parts	28 Parts	27 Parts	
	Vocal Harmony		Vocal Harmony: 54, Synth Vocoder: 20	-	-	
	Preset	Number of Presets	Total 60	-	-	
		Number of User Settings	525	400	415	
		Number of Preset Styles	463 Pro, 46 Session, 6 Free Play, 10 DJ	353 Pro, 34 Session, 3 Free Play, 10 DJ	372 Pro Styles, 32 Session Styles, 10 DJ Styles, 1 Free Play	
	Fingering		Single Finger, Fingered, Fingered On Bass, Multi Finger, AI Fingered, Full Keyboard, AI Full Keyboard	Single Finger, Fingered, Fingered On Bass, Multi Finger, AI Fingered, Full Keyboard, AI Full Keyboard	Single Finger, Fingered, Fingered On Bass, Multi Finger, AI Fingered, Full Keyboard, AI Full Keyboard, Smart Chord	
	Style Control		INTRO x 3, MAIN VARIATION x 4, FILL x 4, BREAK, ENDING x 3	INTRO x 3, MAIN VARIATION x 4, FILL x 4, BREAK, ENDING x 3	INTRO x 3, MAIN VARIATION x 4, FILL x 4, BREAK, ENDING x 3	
	Compatibility		Style File Format (SFF), Style File Format GE (SFF GE)	Style File Format (SFF), Style File Format GE (SFF GE)	Style File Format (SFF), Style File Format GE (SFF GE)	
	Expandability	Expansion Style	Yes	Yes	Yes	
	Other Features	Music Finder (Max.)	-	-	-	
One Touch Setting (OTS)		4 for each Style	4 for each Style	4 for each Style		
Chord Looper		Yes	-	-		
Style Section Reset		Yes	Yes	Yes		
Unison & Accent		-	-	Yes		
Songs (MIDI)	Preset	Number of Preset Songs	5 preset sample Songs	5 preset sample Songs	3 preset sample Songs	
	Recording	Number of Tracks	16	16	16	
		Data Capacity	approx. 3 MB/Song	approx. 3 MB/Song	approx. 1 MB/Song	
		Recording Function	Quick Recording, Multi Track Recording, Step Recording	Quick Recording, Multi Track Recording, Step Recording	Quick Recording, Multi Track Recording	
	Data Format	Playback	SMF (Format 0 & 1), XF	SMF (Format 0 & 1), XF	SMF (Format 0 & 1), XF	
		Recording	SMF (Format 0)	SMF (Format 0)	SMF (Format 0)	
	Functions	Voices	Harmony/Echo	Yes	Yes	Yes
			Panel Sustain	Yes	Yes	Yes
			Mono/Poly	Yes	Yes	Yes
			Arpeggio	Yes	Yes	Yes
Styles		Style Creator	Yes	Yes	Yes	
		Song Creator	-	-	Yes	
		Score Display Function	Yes	Yes	Yes	
		Lyrics Display Function	Yes	Yes	Yes	
Songs		Text Display Function	Yes	Yes	Yes	
		Wallpaper Customization	Yes	Yes	-	
	Lesson/Guide	Follow Lights, Any Key, Karao-Key, Your Tempo	Follow Lights, Any Key, Karao-Key, Your Tempo	Follow Lights, Any Key, Karao-Key, Your Tempo		
	Multi Pads	Multi Pad Creator	Yes	Yes	Yes	
Connections	Registration Memory	Number of Buttons	8	8	8	
	Playlist	Control	Registration Sequence, Freeze	Registration Sequence, Freeze	Registration Sequence, Freeze	
		Number of Records	2,500 (max.) Records per Playlist file	2,500 (max.) Records per Playlist file	500 (max.) Records per Playlist file	
		Recording Time (Max.)	80 minutes/Song	80 minutes/Song	80 minutes/Song	
	Audio Recorder/Player	Recording	WAV (44.1 kHz, 16 bit, stereo), MP3 (44.1 kHz, 128/256/320 kbps, mono/stereo)	WAV (44.1 kHz, 16 bit, stereo), MP3 (44.1 kHz, 128/256/320 kbps, mono/stereo)	*Only on USB WAV (44.1 kHz, 16 bit, stereo)	
		Playback	WAV (44.1 kHz, 16 bit, stereo), MP3 (44.1/48.0 kHz, 64-320 kbps and variable bit rate, mono/ stereo)	WAV (44.1 kHz, 16 bit, stereo), MP3 (44.1/48.0 kHz, 64-320 kbps and variable bit rate, mono/ stereo)	*Only on USB WAV (44.1 kHz, 16 bit, stereo)	
	Overall Controls	Metronome	Yes	Yes	Yes	
		Tempo Range	5 – 500, Tap Tempo	5 – 500, Tap Tempo	5 - 500, Tap Tempo	
		Transpose	-12 – 0 – +12	-12 – 0 – +12	-12 – 0 – +12	
		Tuning	414.8 – 440 – 466.8 Hz	414.8 – 440 – 466.8 Hz	414.8 – 440 – 466.8 Hz	
Octave Button		Yes	Yes	Yes		
Scale Type		9 Types	9 Types	9 Types		
Bluetooth		Yes (Audio) *May not have this functionality depending on the country	-	-		
Miscellaneous	Direct Access	Yes	Yes	Yes		
Storage	Internal Memory		approx. 4 GB	approx. 1 GB	approx. 20 MB	
	External Drives		USB Flash Drive	USB Flash Drive	USB Flash Drive	
Amplifiers and Speakers	Headphones		Standard stereo phone jack	Standard stereo phone jack	Standard stereo phone jack	
	Microphone		Yes	Yes	Yes	
	MIDI		IN/OUT	IN/OUT	-	
	AUX IN		Stereo mini jack	Stereo mini jack	Stereo mini jack	
	LINE OUT		MAIN OUTPUT (L/L+R, R), SUB (AUX) OUTPUT (1,2 (L/L+R, R))	MAIN OUTPUT (L/L+R, R)	MAIN OUTPUT (L/L+R, R)	
	Display Output to External Monitor		Yes (by using a commercially available USB display adaptor) *For a list of compatible devices, access the “Yamaha Downloads” website.	-	-	
	FOOT PEDAL		1 (SUSTAIN), 2 (ARTICULATION 1), Function Assignable	1 (SUSTAIN), 2 (ARTICULATION 1), Function Assignable	1 (SUSTAIN), 2 (UNISON), Function Assignable	
USB TO DEVICE		Yes (x 2)	Yes	Yes		
USB TO HOST		Yes	Yes	Yes		
Amplifiers and Speakers	Amplifiers		(15 W + 10 W) x 2	15 W x 2	15 W x 2	
	Speakers		13 cm x 2 + 2.5 cm (dome) x 2	13 cm x 2 + 5 cm x 2	12 cm x 2	

\* Specifications and appearance are subject to change without notice

